

The Bond

Connecting Kappa Epsilon members

{Spring 2013}

49th KE Convention in Richmond, Virginia

History Tidbits

Collegiate Updates



{PRESIDENT'S CORNER}

KE Takes on Virginia's Capital

Dear Members and Friends of Kappa Epsilon,

Your 2011-2013 Kappa Epsilon Grand Council is honored to present to you our new redesigned website, www.kappaepsilon.org! We hope that you enjoy the exciting changes that have been made. It is still a work in progress. This upgrade would not have been possible without the help of our Executive Director Cindy Baugh along with Craig Armstrong and his incredible team at Loquent Tech Source.

As we embrace our mission to foster professional fulfillment and leadership vision amongst our membership, join me in congratulating our recently announced 2012-2013 Kappa Epsilon award winners: our KE/Merck Vanguard winner, Dr. Celeste Caulder; our Kappa Epsilon Career Achievement Award winner, Dr. Gay Dodson, and our 5 amazing

collegiate Zada M. Cooper Scholarship Award winners!

You can read more about them and their stories, as well as information on how to be considered for these awards, as you read through this issue.

We are truly proud of all of our award winners and their accomplishments.

Convention 2013 is just a few short months away... Are you ready to join us? Kappa Epsilon will meet for our **49th National Convention at the Marriott in Richmond, VA from July 17-20, 2013**. Look for registration and exciting convention information in this issue and on our Kappa Epsilon website, www.kappaepsilon.org.

Thank you for the incredible honor of allowing me to serve as your Grand Council President this biennium.



Erika Dittmar
Grand Council President

I look forward to our journey together to Richmond in July!

In the Bond,

Erika Dittmar
Kappa Epsilon
Grand Council President

Grand Council Officers 2011 – 2013 Biennium

President

Erika Dittmar
Pharmerika@gmail.com
Kappa; Alpha Delta; Alpha Psi; Beta Beta; Beta Iota

President-Elect

Alissa Lockwood
lockwood.alissa@gmail.com
Xi; Sigma; Upsilon; Alpha Chi; Beta Theta; Beta Kappa Colony

VP Alumni Development

Erin Lingenfelter
erin.lingenfelter@gmail.com
Delta; Chi; Psi; Alpha Nu; Beta Zeta

VP Collegiate Development

Sara Snow
sarasnow23@gmail.com
Rho; Alpha Epsilon; Alpha Gamma; Alpha Theta; Beta Mu Colony

VP Member Recruitment

Ivey Robbins
iarobbins0411@email.campbell.edu
Beta; Alpha Beta; Beta Delta; Beta Eta

VP Financial Development

Elena Santayana
elena.santayana@gmail.com
Mu; Pi; Tau; Omega; Beta Lambda Colony

VP Communications

Chelsea Shields
kevpcomm@icloud.com
Lambda; Alpha Lambda; Alpha Rho; Beta Epsilon

Secretary

Anne Rafidi
annerafid@bellsouth.net
Alpha Xi; Alpha Omicron; Alpha Omega; Beta Alpha; Beta Gamma

Immediate Past Grand President

Elizabeth Kort
elizabethkort@yahoo.com
Alpha; Omicron; Alpha Pi; Alpha Phi

{TABLE OF CONTENTS}



7-9 History Tidbits

Learn about Kappa Learn about Kappa Epsilon's History from Past Grand President, Metta Lou Henderson (Sigma).

Thank you!

Spring issue contributors: Michelle McLeod (Alpha Lambda), Amy Blanchette (Beta Iota), Tiffany Le (Alpha Beta), Karina Esquivel (Alpha Omega), Jason Dickey (Alpha Chi), Erika Dittmar (Kappa), Sara Snow (Alpha Chi), Metta Lou Henderson (Sigma), Chelsea Shields (Alpha Chi), Alicia DiAntonio (Beta Zeta).

Also

APhA Sightings

APhA hit Los Angeles, California in early March. See what happened around the KE booth. 4

Top Honors & Awards

Kappa Epsilon members around the country are honored with these awards. 10

In Every Issue

President's Corner 2
Grab Bag..... 9
Chapter News 12
Alumni Corner..... 18

Kappa Epsilon National Office:

Cindy Baugh,
Executive Director
Kappa Epsilon
Fraternity, Inc.
7700 Shawnee Mission
Parkway, Suite 201
Overland Park, Kansas
66202

Phone: 913-262-2749
Fax: 913-432-9040
E-mail:
director@kappaepsilon.org
www.kappaepsilon.org

Office Hours:

Monday – Thursday
8:30 a.m. – 5:00 p.m.
(Intermittent Fridays)

The Bond is an official publication of Kappa Epsilon Fraternity, Inc.

The magazine is published
two times annually.

Articles and pictures
should be sent to the
KE Executive Office,
7700 Shawnee Mission
Parkway #201, Overland
Park, KS 66202-3057 or to
kefrat@aol.com.

The mission of Kappa
Epsilon is to empower
its members to achieve
personal and professional
fulfillment by developing
their confidence, self-es-
teem, interpersonal skills,
and leadership vision, and
to represent the interest of
the membership to health
care professionals and the
community at large.

KE at APhA

The Kappa Epsilon corner exhibit booth at this year's APhA Convention offered attending members a KE Lanyard to acknowledge themselves as a KE Member among the masses who attended the 2013 Los Angeles event.



All convention attendees who stopped by the KE exhibit booth for a view were offered the opportunity to make their own Breast Cancer Awareness (BCA) ribbon highlighting that BCA is one of KE's National Projects.

The table also offered a review of the work of the Kappa Epsilon Foundation with a new color brochure and a review of the Zada Cooper Scholarship Program and photos of the 2012-2013 award winners. The candy offered to our booth visitors was Lifesavers, "Because You Are!"

Those attending the 2013 APhA Convention KE exhibit booth included former KE Grand Presidents, Susie Bartlemay and Metta Lou Henderson along with Cindy Baugh, Executive Director. The group photo includes former Grand President Metta Lou Henderson with Beta Chapter Members Michael Crowe and Jenna Keller.



Making History in Richmond

Why you should attend the 49th KE National Convention!

Registration deadline for Kappa Epsilon's 49th National Convention is June 1st, 2013. The KE web page (www.kappaepsilon.org) has all the information you need for a successful convention including chapter requirements for attendance, attire, chapter and alumni opportunities for Marketplace tables, tentative agendas, description of the convention t-shirt, and proposed amendments to the by-laws.

We can't wait to see you July 17th-20th, 2013 in Richmond, VA!

Learning from Others & Continuing Education

- Everyone is a Leader with Facilitator Leslie Stein of Full Circle Inspiration
- DISC model workshop with Leslie Stein
- Pharmacist continuing education opportunities

Informative Workshops

- Chapter Management Workshop
- Collegiate Workshop
- Alumni & Advisor Workshop
- Recruitment Workshop
- Grant Writing Workshop

Special Events & Gatherings

- KE Spirit Night Welcome Dinner
- Breast Cancer Service Project
- Historical Canal Cruise
- Order of the Rose Ceremony
- Foundation Luncheon
- Alumni Tea & Social
- Awards Banquet



**KE Registration Deadline
June 1, 2013. Complete
the registration form on the
following page today!**

49th National Kappa Epsilon Convention

July 17-20, 2013 at the Richmond Marriott in Richmond, Virginia

Plan Ahead to Attend: A June 1, 2013 Deadline! Ideally, we need know who will attend the 2013 KE Convention by the close of the 2012-2013 Academic Year. Please mark your **May 2013 Calendar** to prepare and submit your registration to attend the **2013 KE Convention** and book your room reservations at the Richmond Marriott.

Name:..... Collegiate or Alumni Chapter:

Mailing Address:..... City:..... State:..... Zip:.....

E-mail Address:..... Daytime phone:.....

Emergency contact name and phone:.....

Licensure Number for CE credit: Dietary restrictions?

Circle the appropriate member type below.

Early Bird Special (Prior to April 1st, 2013)

Alumni	\$335
Collegiate 1st delegate	\$285
Collegiate 2nd delegate	\$185

Regular Rates (On or after April 1st, 2013)

Alumni	\$350
Collegiate 1st delegate	\$300
Collegiate 2nd delegate	\$200

Each collegiate chapter is requested to send two delegates. Both collegiate delegates are required to attend all scheduled programs and activities. Please plan to submit collegiate chapter delegates' registrations together with payment.

All rooms must be booked at the Richmond Marriott, prior to June 15, 2013 to receive the contact rate of \$129 (plus taxes). The special group rate has been requested for singles or for doubles, triples and quads sharing a room. To secure your room, call Marriott Reservations at 1.800.228.9290 and mention Kappa Epsilon Fraternity, Inc. to attain the special group rate. Mail KE Registration form with check payable to: Kappa Epsilon Fraternity, Inc., 7700 Shawnee Mission Parkway, Suite 201, Overland Park, KS 66202-3057. Should you have questions, please write or call director@kappaepsilon.org or 913.262.2749.

The Registration Deadline is June 1, 2013

The new KE Website will present news, updates and the opportunity to register for the 2013 KE Convention!

Past President's History Tidbits

by Metta Lou Henderson (Sigma)

In anticipation of the upcoming **100th** anniversary celebration for Kappa Epsilon in 2021, **Past President Metta Lou Henderson (Sigma)** has graciously provided us with some interesting Kappa Epsilon history!

Changes in Bylaws

The 1963 convention was held at Ohio State University, Columbus Ohio with Jean Barshay (Omicron) serving as president. A proposal was adopted to establish a central office with an appointed Office Manager. Carol Ann Richardson (Xi), the elected secretary, was appointed.

Currently, we had an office with a paid executive director. The major issue of the convention was the incorporation of the KE Constitution into the KE Bylaws. It was no longer necessary to have both. The new Bylaws eliminated the previous 1st and 2nd Vice presidents and created the office of Vice President Alumnae, Vice President Collegiate and Vice President Province.

Louise M. Olson (Beta) became VP Alumnae, Metta Lou Henderson (Sigma) became VP Collegiate and Beverly Praliguske (Zeta) became the VP Province. A number of years

later the Province program was discontinued. Over the passage of time, other changes have occurred in the name of the offices and the responsibilities.

The 1971 convention (50th anniversary) was held at the University of Minnesota, Minneapolis, with Metta Lou Henderson (Sigma) presiding. The Bylaws were changed to include a Vice President Pledge Program. This office was to be held by a collegiate member. Linda Tillinghast (Alpha Beta) was the first to serve.

The 1973 convention was held at Southwestern Oklahoma State College, in Weatherford Oklahoma, with Metta Lou Henderson (Sigma) presiding. The Bylaws were changed to limit the presidency to two terms. Previously, all officers could serve an unlimited number of terms. Unfortunately, all other officers' terms were still not limited.

Historical Throwback

Black Woman Elected President of Pharmacists

A practicing community pharmacist from Oakland, Calif., **Mary Munson Runge**, has been elected the first woman and the first Black to



Mary Runge head the American Pharmaceutical Assn. (APhA) which represents some 60,000 pharmacists and students throughout the U.S.

In this position, she is considered one of the first Black women to serve as president and board chairperson of a major national, professional, medical association. She served as speaker of APhA's House of Delegates for 1977-78 and is an APhA trustee.

Courtesy of www.pharmacist.com

Do you want to be a part of The Bond? Send your photos, article ideas, or member updates to director@kappaepsilon.org

KE's Statement to the APhA Task Force on Women in Pharmacy

by Metta Lou Henderson (Sigma)

The APhA Task Force on Women in Pharmacy was established by Mary Munson Runge (honorary) during her presidency of APhA. Mary was the first woman and first African American to serve as APhA president. Lucinda Maine (Phi) was the student member of the Task Force and Gloria Niemeyer Francke (Pi) was the APhA Staff Liaison. The purpose was "to study the impact on the pharmacy profession of the growing number of women selecting a career in pharmacy."

At the 1980 APhA meeting in Washington DC, a meeting was held for individuals and groups to make statements to the Task Force relating to this issue.

Kappa Epsilon was the only pharmacy fraternity to present a statement on that day. Metta Lou Henderson (Sigma) made the presentation.

It was a lengthy statement that included the following: "Kappa Epsilon Fraternity, since its founding has been interested in the role of women in pharmacy. Over the years, Kappa Epsilon has supported research projects which have attempted

to answer many of the questions relating to women pharmacists."

"Recent conversations with collegiate members indicate the possibility of combining marriage and part-time practice is still a major factor in their decision to select pharmacy as a career."

"Problems arise when women view pharmacy as a part-time career rather than a full-time one. However, those women who elect to have a full-time career should not have barriers created for them based upon employer's views concerning part-time practice."

"In discussing the role of women pharmacists, our members express a strong opinion that women are changing the image of the pharmacist in the consumer's eye. The public perceives the women as being more caring, more compassionate, gentle and more concerned about others. They are willing to discuss diseases and medications with the patient. Since of the majority of the consumers are women, they find that women prefer to talk with women."

Susie Bartlemay (Xi) presented a statement on behalf of the Dallas/Worth Metroplex Alumnae Chapter of KE. So, in fact, KE was well represented at the open meeting.

The Final Report of the Task Force was presented in 1981 and included many important facts and recommendations. This was the first time that a major emphasis had been placed upon the increasing number of women pharmacists. To younger members of KE, some of the comments seem "odd" but at that time, they were very important as this was the beginning of the major increase in the number of women pharmacy students and later women pharmacists.

{THE GRAB BAG}

5 Ways KE Collegiate Chapters Have Sprung into Spring!

1. Pharm-CORP

Many collegiate chapters will be visiting local high schools during the spring semester to share information about the profession of pharmacy.

2. Flamingo Flocking Fundraiser

Yards of pharmacy faculty and students are being flooded this Spring with plastic pink flamingos by several KE collegiate chapters, including **Alpha Chi**. You can pay to have someone's yard "flocked", to remove the flamingos out of your yard, or even buy "flocking insurance" to avoid being flocked.

3. KE vs. Faculty Basketball Game

Alpha Beta chapter is hosting a KE vs. Faculty basketball game, which will benefit the local Ronald McDonald House.

4. Sunscreen Awareness

Lambda chapter is making sunscreen with a local girl scout troupe(s).

5. Candy for Cancer

Tau chapter is putting together bags of Easter candy and delivering them to adults receiving cancer treatment at a local cancer center.

{TOP HONORS}

**Dr. Catherine
Hatfield
Receives the
KE Outstanding
Advisor Award**



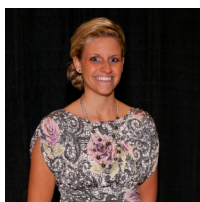
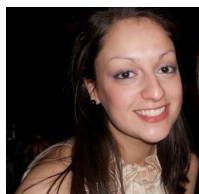
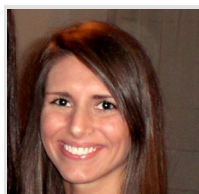
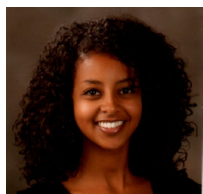
Congratulations to Dr. Catherine Hatfield on receiving the 2012-13 KE Outstanding Advisor Award.

{TOP HONORS}

KE leaders honored with awards

Zada M. Cooper Scholarships Awarded

The Zada M. Cooper Scholarship was established in 1955 in honor of Kappa Epsilon's founder, Zada M. Cooper. Recognizing superior achievement, the scholarship is supported by a small percentage of each member's national dues in addition to KE members who donate to the scholarship fund. The award consists of five \$750 scholarships presented annually to active **collegiate** members by the KE Foundation. We are pleased to announce scholarships being awarded to (clockwise from top left) **Loza Dejene** (Alpha Beta), **Morgan Fleming** (Beta Kappa), **Rebecca Clarke** (Alpha Phi), **Lauren Harbaugh** (Psi), **Dana Merkel** (Chi).



Dr. Celeste Rudisill Caulder Receives KE/Merck Vanguard Leadership Award

Kappa Epsilon Foundation, Inc. along with Merck proudly announces that **Dr. Celeste Rudisill Caulder** (Alpha Lambda) has been selected as the 2013 recipient of the KE/Merck Vanguard Leadership Award. The award honors an exemplary pharmacist for multiple achievements within the discipline.



Dr. Caulder serves as an Assistant Professor for the Department of Clinical Pharmacy and Outcomes Sciences for the South Carolina College of Pharmacy located at the University of South Carolina in Columbia. Dr. Caulder has also served as a promotional speaker for Pfizer, Inc.

Dr. Gay Dodson Receives KE Career Achievement Award



We are proud to announce that **Dr. Gay Dodson** (chapter) has been selected as the recipient of the Fraternity's 2013 Career Achievement Award. This award honors one distinguished pharmacist annually and cites the member's contributions to the profession of pharmacy.

As an adjunct to the award, Dr. Dodson was nominated for the Profession Fraternity Association's Career Achievement Award.

Do you want to be a part of The Bond? Send your photos, article ideas, or member updates to director@kappaepsilon.org.

{AWARD ANNOUNCEMENTS}

Nominate your colleagues for these prestigious awards

KE/Merck Vanguard Leadership Award

Awarded to an exemplary alumnus who has contributed both professionally and within their community.

Nominations due October 15th annually

Career Achievement Award

Active alumnus member noted for their professional accomplishments.

Nominations due October 15th annually

Linda Rodgers Memorial Award

Honors a KE member who exemplifies Linda's characteristics of leadership, dedication, diplomacy, friendship, and inspiration to others. \$200 award.

Nominations due May 15th in odd years (Alumni)

Nominations due May 15th in even years (Collegiate)

Zada Cooper Scholarships

Recognizes superior achievement and is presented annually to active collegiate members. \$750 scholarship awarded.

Applications due November 15th annually

KE/AFPE Nellie Wakeman Fellowship

Monetary award used to encourage members to pursue an advanced degree in a college of pharmacy graduate program. \$7500 award.

Applications due February 1st annually

Foundation Grants

Provides members and chapters with incentive money for innovative educational projects in the profession of pharmacy.

May apply anytime!

Give to KE today

In a continuing effort to provide financial stability and perpetual support for Kappa Epsilon Fraternity and the Kappa Epsilon Foundation, please consider making a donation to one or both of these entities. Let us speak with one voice, in strategy and purpose, and share our resources to promote the future of Kappa Epsilon.

My gift to the Fraternity is \$..... My gift to the Foundation is \$.....

Gifts to the Foundation are tax-deductible.

Please make checks payable to Kappa Epsilon Fraternity and/or Kappa Epsilon Foundation. or pay by credit card:

Mastercard/Visa #:..... Exp:.....

Name:.....

Street, City, State, Zip:

Send form to: Kappa Epsilon, 7700 Shawnee Mission Pkwy, #201 Overland Park, KS 66202

You may also pay via Pay Pal at www.kappaepsilon.org

{CHAPTER UPDATES}

Alpha Lambda ~ University of South Carolina

The Alpha Lambda chapter of Kappa Epsilon is located at the South Carolina College of Pharmacy, housed in the University of South Carolina's campus. Our biggest project is Breast Cancer Awareness Week. For the past two consecutive years, we have raised over \$1,000 to donate to Susan G. Komen. Breast Cancer Awareness Week culminates with both new and prospective members participating in the Walk for Life in Columbia, SC.

Members also participate in other service projects during each meeting which have included making capes and tutus for a local children's home, bookmarks for a

nursing home, and emergency contact cards for our fellow students. Last year we implemented an annual KE Service Award which we award to the SCCP student who has exhibited the most dedication to service over the past year. We also have multiple social events throughout the year including potluck dinners and attending sporting events. In the past few years, the size of our chapter has greatly increased. The Alpha Lambda chapter was proud to welcome 22 new members during the 2012-2013 school year, which has brought us to a total of 63 members.



{CHAPTER UPDATES}

Alpha Beta ~ Southwestern Oklahoma State University

We are the Alpha Beta chapter of Kappa Epsilon at Southwestern Oklahoma State University in Weatherford, Oklahoma. Currently, we have 40 active members and every semester, we are excited to welcome new members to our fraternity.

On our campus, we are very active in fundraising and giving back to the community. One of our biggest events is participating in Relay for Life; here our members take turn walking or jogging around our gym track for 12 hours raising money for the American Cancer Society. We also do Flamingo Flocking. We place flamingoes on people's lawn and they can donate money to Relay for Life to have us remove the flamingoes and "flock" another neighbor's yard.

Other community service projects entail raising money for the Agape Clinic, a free health clinic to those less fortunate, and hosting a Breast Cancer Awareness Dinner. Here we invite breast cancer survivors to come and share their stories with us.

Not only are we active within our community, but we also have a strong support network within our chapter. We have set up job-shadow opportunities with our local pharmacies for our pre-pharmacy students. This gives them an opportunity to experience what all a pharmacist does.

This year one of our past presidents, Loza Dejene, received the Zada Cooper Scholarship of \$750, an award given to a highly active collegiate member with superior achievement. As president, she promoted sisterhood within our fraternity and was responsible for creating job-shadowing opportunities for our pre-pharmacy members.

Some of our sisterhood events include competing in the Hygeia Bowl against the other campus pharmacy fraternities (which we won this year!), participating in a Kappa Epsilon versus the pharmacy faculty in basketball, and a tacky Christmas sweater party.

As a growing chapter, we look forward to another successful year, continuing our charitable works and promoting strong women pharmacists.



Do you want to be a part of The Bond? Send your photos, article ideas, or member updates to director@kappaepsilon.org

{CHAPTER UPDATES}

Alpha Chi ~ Shenandoah University

The Alpha Chi chapter is doing lots of exciting things this year. We finished off last semester with a successful Breast Cancer Awareness Benefit Dinner and were able to raise over \$400 to donate to the Young Survival Coalition for the semester. We also had a successful Bra Drive fundraiser in which we were able to donate new and gently used bras to local homeless shelters.

Spring semester we have been busy preparing new pledges for membership as well as getting ready for a visit from our Grand Council Connection. Our chapter has been busy with numerous PharmCorp events as well as establishing locations to perform local Poison Prevention puppet shows.

During Poison Prevention, a local platform, we perform puppet shows for

children in the community to educate them on the harms of local household products.

Furthermore, our chapter has decided to go on a day retreat to King's Dominion amusement park this year to allow for bonding with new members and to give a much-needed celebration to the efforts of current members.

Lastly, I am happy to say that the majority of the chapter we be able to be in attendance at this years National Convention so we look forward to meeting with all our sister chapters.



Do you want to be a part of The Bond? Send your photos, article ideas, or member updates to director@kappaepsilon.org

{CHAPTER UPDATES}

Alpha Omega ~ University of Florida at St. Petersburg

The Alpha Omega Chapter of Kappa Epsilon at the University of Florida is a co-ed fraternity actively engaged in the community by participating in charitable events and promoting health awareness. Our chapter focuses on the Susan G. Komen for the Cure, performs breast cancer screenings, and speaks to high school students. Opportunities to connect with the public and with one another, build experience that is vital to our professional development.

The vibrant city of St. Petersburg is the host of our annual events, Race for the Cure and Drink for Pink. All of our members participate in the 5K to support the Susan G. Komen for the Cure. Drink for Pink has been a successful event the last few years, as we have gathered the support of our peers and the community. Every semester we hold screenings to promote breast cancer awareness. The public is very receptive of us and we enjoy having the opportunity to connect with them.

Sharing our profession through the PharmCORP program is another aspect of our involvement. Twice a year, we visit a local high school and provide insight about our career. We give a presentation to open the minds of high school students to pharmacy as a career choice.

We empower ourselves by collaborating on projects like these as we strive to fulfill our professional endeavors. We

intend to continue our advocacy and further the growth of our organization. We are excited for the upcoming school year, as the Alpha Omega Chapter is always seeking new ways to get involved and make an impact at our campus and in the community.



Do you want to be a part of The Bond? Send your photos, article ideas, or member updates to director@kappaepsilon.org

{CHAPTER UPDATES}

Beta Iota ~ Lake Erie College of Osteopathic Medicine at Bradenton, FL

The Beta Iota Chapter at Lake Erie College of Osteopathic Medicine (LECOM) in Bradenton, Florida, was chartered in May 2010. The chapter has successfully grown and has begun making a reputation in the county. Service projects include Pharm-CORP presentations, Manatee County Meals on Wheels, and we hope to begin fostering a relationship with the Make a Wish Foundation.

Members excel both academically and through leadership. Currently one member serves on the SGA board, and three members were inducted into the Rho Chi Pharmacy Honors Fraternity. The enthusiasm among Potential New Members and members to pursue leadership positions is outstanding.

This semester we have completed a beach clean-up, a 5K breast

cancer walk, and we have collected supplies and food for the Foundations for Dreams and Meals on Wheels.

Twenty seven students are completing the education process this semester to gain entry into Beta Iota. We hope to continue to grow and foster the new chapter of Beta Iota through the coming years. Many individuals are thinking long term about Kappa Epsilon and show the drive and passion to prove that they are **KE4Life**.



Do you want to be a part of The Bond? Send your photos, article ideas, or member updates to director@kappaepsilon.org

{CHAPTER UPDATES}

Beta Zeta ~ The University of Findlay

Hello from the Beta Zeta chapter in Findlay, Ohio! We have grown steadily over the past two years to a group of 50 collegiate members and twenty alumni. We are currently holding our spring recruitment and will be inducting 10 new members on March 18th. We will be sending off our 15 P5 members in April, who are leaving to go on rotations in July. We just finished a pharmacy apparel sale and will be having another pharmacy tumbler sale in April!

We are planning multiple chapter and campus wide events at The University of Findlay for the rest of this spring semester and next fall. We are having a St. Patrick's Day party and our 3rd Annual Alumni Dinner, where we come together to honor our old and new alumni members. Our chapter is hosting a "KE Kolor Fun Run" during our campus' Welcome Week in the fall. We are also co-sponsoring a Pharmacy Greek Week in the fall with the other Findlay pharmacy fraternity chapters of Alpha Zeta Omega and Phi Delta Chi in hopes to promote our professional pharmacy organizations.



At the end of March we are also participating in The University of Findlay's Relay for Life to raise money as a chapter to support cancer research. Our chapter is also participating in a Mobile Food Pantry in April.

Within the past year our chapter has joined up with Findlay's Cancer Patient Service's Campus Companions program. This program assists Findlay families

affected by cancer by accompanying family members to various activities. Our chapter went to the firehouse and interacted with families visiting there. We have also participated in health screenings at Marathon Petroleum Corporation, performing cholesterol, BP, and A1C screenings for their employees. We have been having a great year making a difference and hope to continue the great strides we have made next year!

Do you want to be a part of The Bond? Send your photos, article ideas, or member updates to director@kappaepsilon.org

{ALUMNI AFFAIRS}

Alumni Interest Committee Reactivated

This past convention, the Grand Council voted to reactivate the Alumni Interest Committee. The charges of this committee include **supporting the KE National Liaisons**, aide in building a system for a member accessible and searchable **alumni directory**, and alumni **outreach and retention**.

Do you have a special interest in alumni affairs? We are looking for inventive, dedicated committee members from our alumni and collegiate membership. We could love to hear from those of you who have opinions on how to better retain members from graduation into their careers. Can you help us improve our current program on how the fraternity can serve you or how we can encourage alumni to serve the fraternity? Drop a line to our VP of Alumni Development at erin.lingenfelter@gmail.com.



Kappa Epsilon Fraternity – Alumni Dues Invoice 2013

KE Executive Office • 7700 Shawnee Mission Parkway, Suite 201 • Overland Park, Kansas 66202

Phone: 913-262-2749 • Fax: 913-432-9040 • E-mail: director@kappaepsilon.org • Web: www.kappaepsilon.org

When you were initiated into Kappa Epsilon you made a life-long commitment to promote the values of KE. That special commitment works both ways; KE is committed to you as well. By sharing the information that is relevant to your life, it enables the Executive Office to keep you informed about the profession, draw upon your professional expertise, provide a bank of resources for continuing education and guard the names and addresses of you and your fellow colleagues. We thank you for your dedication and continued support of KE!

Preferred Title Alumni Chapter

Name

Address

City State Zip

E-Mail Telephone

Chapter of Initiation Graduation Year

Date of Birth Name of Spouse

Name and address of Employer:

Does your Employer match donations? ☐ Yes ☐ No Type

1) Are you willing to share your expertise by being part of a speaker bureau or writing an article for the Bond? Speaker's Bureau? ☐ Yes ☐ No Bond article? ☐ Yes ☐ No

Area of expertise:

2) Would you be interested in serving as National Liaison between Chapters and Grand Council? ☐ Yes ☐ No

3) Tell us what is new in your life! Indicate if we can share or publish this information.

☐ Yes ☐ No

Alumni Member Dues \$

\$55 Alum on Rotation; \$60 the first year after graduation; \$75 second year after graduation; and \$85 thereafter. 100% of the dues amount is deductible as a business expense.

KE Fraternity - optional gift \$

This is an optional, non tax deductible gift to the operating fund of the Fraternity. This gift will help provide financial stability and perpetual support for Kappa Epsilon.

KE Foundation - optional gift \$

This is an optional, tax deductible contribution that will provide continuing support for scholarships, educational programming, and grants for chapters/individuals starting worthy pharmacy projects.

KE Merchandise

KE Christmas _____ x \$ 10 \$

Ornament

KE red lapel _____ set(s)x\$30 \$

pins

1 set = 5 pins

(Prices shown for merchandise include shipping and handling)

TOTAL \$

Method of Payment: ☐ Master Card ☐ Visa ☐ Check ☐ Money Order

Credit Card Account Number Expiration Date

Credit Card Holder Name, Address, Zip

List address where credit card statement is received, if different from above.

X Signature of Authorization required for credit card use