

The Bond

Connecting Kappa Epsilon members
{Spring 2012}

Three truths time has revealed to KE Alumnus

Memorial for Juan Mendoza
Collegiate Updates



{PRESIDENT'S CORNER}

Grow with Kappa Epsilon

Dear Members and Friends of Kappa Epsilon,

Your Kappa Epsilon Grand Council has been hard at work. We have 3 new colonies that formed this past semester. Our website is also under construction. Stay tuned for a new and improved site in the near future. We are also working on our Executive Director transition preparations.

Kappa Epsilon continues to foster a professional fulfillment and leadership vision amongst our membership. We are proud to present our KE/ Merck Vanguard, KE Career Achievement, and five amazing collegiate Zada M. Cooper award recipients.

You can read more about their stories, as well as information on how to be considered for these awards in the future.

Save the date for our **49th National Convention July 17-20, 2013 in Richmond, Virginia.**

Through the many changes we will all go through over the next biennium we must remember to keep KE as a cornerstone. While transitions in our lives are constantly happening, KE and all of its members will be there to support each other.

You'll find a variety of ways to uphold your commitment and support Kappa Epsilon as you read through this issue.



Erika Dittmar
Grand Council President

In the Bond,

Erika Dittmar
Kappa Epsilon
Grand Council President

Grand Council Officers 2011 – 2013 Biennium

President

Erika Dittmar
Pharmerika@gmail.com
Kappa; Alpha Delta; Alpha Psi; Beta
Beta; Beta Iota

President-Elect

Alissa Lockwood
lockwood.alissa@gmail.com
Xi; Sigma; Upsilon; Alpha Chi; Beta
Theta; Beta Kappa Colony

VP Alumni Development

Erin Lingenfelter
erin.lingenfelter@gmail.com
Delta; Chi; Psi; Alpha Nu; Beta Zeta

VP Collegiate Development

Sara Snow
sarasnow23@gmail.com
Rho; Alpha Epsilon; Alpha Gamma;
Alpha Theta; Beta Mu Colony

VP Member Recruitment

Ivey Robbins
iarobbins0411@email.campbell.edu
Beta; Alpha Beta; Beta Delta; Beta
Eta

VP Financial Development

Elena Santayana
elena.santayana@gmail.com
Mu; Pi; Tau; Omega; Beta Lambda
Colony

VP Communications

Chelsea Shields
cvshieldspharmd@gmail.com
Lambda; Alpha Lambda; Alpha Rho;
Beta Epsilon

Secretary

Anne Rafidi
annerafid@bellsouth.net
Alpha Xi; Alpha Omicron; Alpha
Omega; Beta Alpha; Beta Gamma

Immediate Past Grand President

Elizabeth Kort
elizabethkort@yahoo.com
Alpha; Omicron; Alpha Pi; Alpha Phi

{TABLE OF CONTENTS}



4-5 Three Truths Time has Revealed

Michelle Johnson (Alpha) shares her experience as a working mom and how she keeps her balancing act going.

Photo credit: istockphoto.com

Thank you!

Spring issue contributors: Jerome Benosa (Alpha Chi), Erika Dittmar (Kappa), Michelle Johnson (Alpha), Michael Klein (Sigma), Yao Hua (Raymond) Lin (Upsilon), Erin Lingenfelter (Psi), Alissa Ridge (Omega), Sandra Rojc (Psi), Gina Scibetta (Rho), Sara Snow (Alpha Chi), Amanda Walls (Tau)

Want to get involved? Deadline for submissions for the Fall 2012 issue is Sept. 15, 2012. E-mail kefrat@aol.com

Also

ASHP Sightings

The ASHP Mid-Year Convention hit New Orleans, LA, this past December. See what happened around the KE booth. 6

Celebration of Life

Learn about one of our recently fallen KE brothers 8

Top Honors & Awards

Kappa Epsilon members around the country are honored with these awards. 10

In Every Issue

President's Corner 2

Chapter News 12

Alumni Corner..... 17

Kappa Epsilon

National Office:

Nancy Stankiewicz,
Executive Director
Kappa Epsilon
Fraternity, Inc.
7700 Shawnee Mission
Parkway, Suite 201
Overland Park, Kansas
66202

Phone: 913-262-2749

Fax: 913-432-9040

E-mail: kefrat@aol.com

www.kappaepsilon.org

Office Hours:

Monday – Thursday
8:30 a.m. – 5:00 p.m.
(Intermittent Fridays)

The Bond is an official publication of Kappa Epsilon Fraternity, Inc.

The magazine is published two times annually.

Articles and pictures should be sent to the KE Executive Office, 7700 Shawnee Mission Parkway #201, Overland Park, KS 66202-3057 or to kefrat@aol.com.

The mission of Kappa Epsilon is to empower its members to achieve personal and professional fulfillment by developing their confidence, self-esteem, interpersonal skills, and leadership vision, and to represent the interest of the membership to health care professionals and the community at large.

Three truths time revealed

Three great lessons learned by Michelle Johnson (Alpha) since she graduated

“As life gets more complicated, it really gets simpler, because you start to prioritize.

How fitting to think about life, priorities, and balancing it all while trying to get everyone to bed and end another hectic day.

When I graduated pharmacy school fifteen years ago, life was complicated in other ways - worrying about first jobs and where to live. New grads and students will understand, and the rest of us have all been there. There are truths you soon realize, though.

The first big truth, you can't have it all. The cultural ideal of a working, hands-on, housecleaning mom doesn't exist. If she does, she burns out quickly, and needs fluoxetine. In my life I was fortunate, and patient enough to find a wonderful mate. My husband and I talked a lot about what we wanted out of life, and made a general road map for our lives early. We felt strongly about having a parent home if we had children. I loved my job as pharmacist, and he was not as passionate about his career as an engineer. After our daughter was born, I went back to work and my husband quit his job. After three more years, he expanded his staff with our son. In the first year I really struggled with the guilt of leaving my child for work, even though she was with dad. I had a hard time giving up household duties, and

the fact that my husband did such a good job sometimes made it harder. Culturally, I felt I still needed to try to do it all. My husband finally spoke up one day, saying my job was to go to work and earn money, and his job was to keep the house running and take care of the kids. He asked me to put down the dish towel and go play with the kids, and he would unload the dishwasher. I have since realized that most people that look like they are "doing it all" probably hire someone to clean, worry and pray their kids don't get sick, and eat in their cars on the go a lot!

The second big truth? As life gets more complicated, it really gets simpler, because you start to prioritize. When I was young, everything was a big deal. I have found that how and where I spend time involves deciding what I value. My family, work, and small group of close friends keeps me busy. You will trim some activities out of your life, and you'll keep the things truly important. I am involved in my state pharmacy association on a few committees, things I can do behind the scene while my kids are at school, and around my work schedule. My KE involvement has evolved since I first graduated. I still stay involved by serving as a preceptor with the college, and

“Priorities can mean being more creative on how you stay involved, and they change as your life changes.”

make sure I am a good representative of who KE members are. Priorities can mean being more creative on how you stay involved, and they change as your life changes.

The final truth? You never really lose dreams and ambition, but it sometimes changes as you experience more life. I have dreams and things I'd like to do, professionally and personally. Some things are now on a different time line, and take my husband and family into consideration now. My goals to run for office in the state pharmacy

association or become more involved at a national level will happen when my kids need me less. Our marriage is a team effort, and my husband has been able to pursue different interests in his spare time. I am excited that he'll have time to do more when

our son starts school this year. Sharing your dreams means compromise, but mutual support makes it so much more fulfilling. Your dreams never should leave, but they may change a little.

Is life how I planned it as I was walking

across the stage to receive my degree? No, it's even better than I thought it would be. Life throws so many challenges, but never more that we can overcome as we persevere. Life comes into clearer focus as you grow and learn about yourself. Realizing that you can't do it all becomes freeing as you decide on where your passions lie, and knowing that you need time to accomplish your dreams gives you a reason to face each day anew. And maybe life won't be exactly as you planned, but that's the exciting part! The house is quiet now, but there is anticipation in tomorrow, and what it will bring.



Michelle Johnson (Alpha) along with her husband Ben, her daughter Amelia, 7, and her son Isaac, 4.

Photo Courtesy of Michelle Johnson.

{ASHP SIGHTINGS}



Clockwise from top left, **Nicole Freund**, **Kellie White**, **Jeana Walton-Day**, and **Kelsie Young** (all Alpha Omicron); **Sarah Nordberg** and **Nicole Slater** (both Alpha Chi); **Rebecca Freese**, **Clair Aguilar**, **Erica Willcoxson**, and **Melissa Chudow** (all Kappa); **Sarah Gee** and **Kara Willis** (both Omega).

{ASHP SIGHTINGS}



Clockwise from top left, **Ivey Robbins** and **Amy Mitchell** (both Alpha Rho); **Kenya Lovett** (Alpha Pi) and **Erin Lingenfelter** (Psi); **Sweta Patel** and **Hetal Sham** (both Mu); **Emily Kirchner** and **Sara Snow** (both Alpha Chi); **Thao Pham** (Beta Zeta); **Brittany Herring** and **Valerie Johnson** (both Alpha Xi).



{MEMORIAL}

A Celebration of Life

Juan Mendoza (Alpha Chi) passed away just five months after his PharmD graduation ceremony

Juan Mendoza, fellow Kappa Epsilon fraternity brother, passed away on December 9, 2011. He was a recent graduate of Bernard J. Dunn School of Pharmacy and had just started his young pharmacy career.



Juan pledged Kappa Epsilon during the spring semester of 2008 at a time when there was only one other active male member in the fraternity. He immediately became one of the most popular members of the chapter and won the hearts of his fellow members. Whether it was volunteering at Breast Cancer Awareness Dinners or fundraising at local events such as Cocktail for a Cure, Juan was able to touch the community of Winchester, Virginia.

His generosity and kindness was seen in his willingness to lend a helping hand to the people around him. Through his inspiration and humor, the Alpha Chi chapter of Kappa Epsilon has become one the most successful and diverse fraternities on campus.

In his personal life, Dr. Mendoza was a dear husband to his wife, Yahaira, and a loving father to his young daughter, Natalie. He is survived by them both along with his countless pharmacy friends and family.

~Jerome Benosa (Alpha Chi)



If you would like to send your condolences to the Mendoza family, the address is:

Mrs. Yahaira Mendoza
12772 NW 11th Terrace
Miami, FL 33182

Or visit the facebook group,
Remembering Juan Mendoza.

{THE GRAB BAG}

CATCH the Attention of Potential New Members!

Catch the interest of new pharmacy students as early as possible! Alpha Epsilon goes to P1 orientation and gives out glass KE mugs filled with candy and show a short movie clip of pictures from the previous year's events. They also invite the P1s to a luncheon where they talk to members and learn more about KE.

Ask potential new members (PNMs) to get involved with your chapter's philanthropic events! Members of Beta encourage PNMs to participate with them in a Race for the Cure event giving them the opportunity to get involved before they commit to the fraternity.

Think of activities where current KEs and PNMs can get to know each other one-on-one! Kappa held a KE Picnic in the Park day during rush week. Several games such as a jelly bean race, three legged race, and a balloon-popping relay made for a memorable bonding experience.

Come up with creative ice breakers! Alpha Beta came up with "Find a Kappa Who..." PNMs were given a sheet and had to find members who matched the clues on the squares.

Have alumni members involved in recruiting PNMs! Upsilon invited their alumni to recruitment social events. Each alumnus gave their reasons for joining Kappa Epsilon and explained how it has positively impacted their lives and careers as pharmacists.

Standout on Campus

Mr. Pharmacy Pageant Omega reaches out to the men of University of Missouri-UMKC Pharmacy School to conduct a Mr. Pharmacy Pageant.

Pink Ribbon Football Game Psi, in coordination with another Ohio Northern University organization, conducts a pink ribbon football game.

Minute-To-Win-It Game Night Psi Chapter holds a "minute to win it" game night consisting a series of games for the members to play in a "field-day" type set up.

Make Sunscreen with a Local Girl Scout Troop Lambda broadens their outreach to the local Chapel Hill Community by making sunscreen with a local girl scout troop.

Paint the College Pink Day Students of Florida A&M University College of Pharmacy are encouraged to wear pink in support of breast cancer awareness. A KE member of Alpha Xi goes to the classes at a particular time, which will be announced to the classes, to tally the number of participants in each class. The class with the highest percentage of people wearing pink will have a "Pink Pizza Party" later that month.

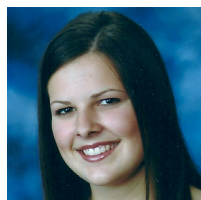
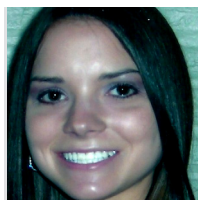
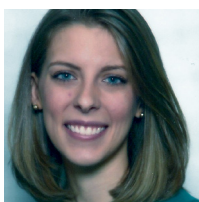
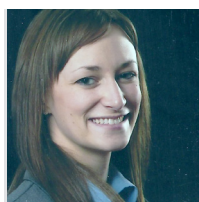
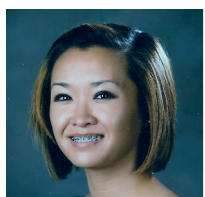


{TOP HONORS}

KE leaders honored with awards

Zada M. Cooper Scholarships Awarded

The Zada M. Cooper Scholarship was established in 1955 in honor of Kappa Epsilon's founder, Zada M. Cooper. Recognizing superior achievement, the scholarship is supported by a small percentage of each member's national dues in addition to KE members who donate to the scholarship fund. The award consists of five \$750 scholarships presented annually to active **collegiate** members by the KE Foundation. We are pleased to announce scholarships being awarded to (clockwise from top left) **Sandra Souvannachak** (Alpha Beta), **Lauren Rupp** (Psi), **Emily Willett** (Alpha Lambda), **Avery Karnes** (Alpha Beta), and **Mary Riedy** (Alpha Phi).



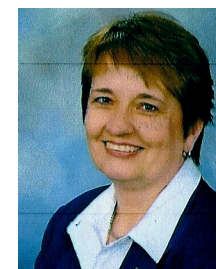
Dr. LeAnne Davidson Kennedy Receives KE/Merck Vanguard Leadership Award

Kappa Epsilon Foundation, Inc. along with Merck proudly announces **Dr. LeAnne Davidson Kennedy** (Alpha Rho) has been selected as the 2012 recipient of the KE/Merck Vanguard Leadership Award. The award honors an exemplary pharmacist for multiple achievements within the discipline. Dr. Kennedy is the clinical specialist for inpatient hematology and oncology at Wake Forest Baptist Health in Winston-Salem, NC and is director of the PGY2 oncology residency. Dr. Kennedy is also an adjunct assistant professor at Campbell University and North Carolina Schools of Pharmacy.



Dr. Lisa A. Lawson Receives KE Career Achievement Award

We are proud to announce **Dr. Lisa A. Lawson** (Beta) has been selected as the recipient of the Fraternity's 2012 Career Achievement Award. This award honors one distinguished pharmacist annually and cites the member's contributions to the profession of pharmacy. As an adjunct to the award, Dr. Lawson will be nominated for the Professional Fraternity Association's Career Achievement Award. Dr. Lawson is the first female Dean at the Philadelphia College of Pharmacy/University of the Sciences.



Do you want to be a part of The Bond? Send your photos, article ideas, or member updates to kefrat@aol.com.

{AWARD ANNOUNCEMENTS}

Nominate your colleagues for these prestigious awards

KE/Merck Vanguard Leadership Award

Awarded to an exemplary alumnus who has contributed both professionally and within their community.

Nominations due October 15th annually

Career Achievement Award

Active alumnus member noted for their professional accomplishments.

Nominations due October 15th annually

Linda Rodgers Memorial Award

Honors a KE member who exemplifies Linda's characteristics of leadership, dedication, diplomacy, friendship, and inspiration to others. \$200 award.

Nominations due May 15th in odd years (Alumni)

Nominations due May 15th in even years (Collegiate)

Zada Cooper Scholarships

Recognizes superior achievement and is presented annually to active collegiate members. \$750 scholarship awarded.

Applications due November 15th annually

KE/AFPE Nellie Wakeman Fellowship

Monetary award used to encourage members to pursue an advanced degree in a college of pharmacy graduate program. \$7500 award.

Applications due February 1st annually

Foundation Grants

Provides members and chapters with incentive money for innovative educational projects in the profession of pharmacy.

May apply anytime!

Give to KE today

In a continuing effort to provide financial stability and perpetual support for Kappa Epsilon Fraternity and the Kappa Epsilon Foundation, please consider making a donation to one or both of these entities. Let us speak with one voice, in strategy and purpose, and share our resources to promote the future of Kappa Epsilon.

My gift to the Fraternity is \$..... My gift to the Foundation is \$.....

Gifts to the Foundation are tax-deductible.

Please make checks payable to Kappa Epsilon Fraternity and/or Kappa Epsilon Foundation. or pay by credit card:

Mastercard/Visa #:..... Exp:.....

Name:.....

Street, City, State, Zip:

Send form to: Kappa Epsilon, 7700 Shawnee Mission Pkwy, #201 Overland Park, KS 66202

You may also pay via Pay Pal at www.kappaepsilon.org

{CHAPTER UPDATES}

Rho ~ University of Cincinnati Medical Center

Rho chapter is located at the University of Cincinnati College of Pharmacy in Cincinnati, Ohio. We are lucky to have a community that hosts our school be surrounded by opportunities.

Our journey truly starts with a rocky foundation. Recently off of a probationary period and a rough recruitment of a scant five members, Rho chapter was beaten and bruised with an unsure future. Shortly after convention we had an explosion of activities – everything from fundraisers and community service. In a school with only 10 weeks per quarter we had limited time to execute our programs, but we started early.

Before the introductory lectures could begin we had our first program scheduled. The Susan G. Komen Race for the Cure was held in Cincinnati the first weekend of school. Shortly after that we executed another breast cancer fundraiser where we sold chocolate bars wrapped in pink October awareness wrappers.



Through these two combined efforts we raised over \$1,000 for the Greater Cincinnati Breast Cancer Alliance.

Recruitment came up fast for our chapter and our hard work paid off - we doubled our number of members after recruitment. This was successful beyond our wildest hopes and relieving to know that Rho Chapter will continue on with such a great group.

In the fall of 2011 our chapter participated in Girls on the Run, a non-profit group that uses running and other exercise to promote confidence, self worth and belonging in 3rd through 8th grade girls. This was a hugely successful program for Cincinnati and we were glad to have impacted it as role models for young girls.

In support of the home team, we worked at a Cincinnati Bengals concession stand for profits and gratuity to put towards KE. It was a busy day but we went home with over \$600 for the day.

November brought cold weather and holiday preparation to Cincinnati and the Rho chapter did not miss a beat. We adopted a family's Christmas requests through the charitable organization St. Vincent de Paul. As a school and with some especially generous donations from the faculty we were able to provide our family, a single mom with 3 boys, with almost \$500 worth of gifts.

In 10 weeks our chapter had completely turned around. We doubled our chapter size and raised almost \$2600, what a fundraising effort! The success of Rho Chapter is a testament to the dedication of its officers, members and alumni.

~Gina Scibetta, Chapter President

Fall 2012 Issue Chapter Assignments due September 15th, 2012: Alpha Gamma, Alpha Delta, Alpha Epsilon, Alpha Theta, Alpha Nu, Alpha Xi, Alpha Omicron, Alpha Pi, Beta Gamma, Beta Theta Colony, Greater Kansas City Alumni, Phoenix Alumni, Greater Triangle (North Carolina) Alumni, Charleston Alumni.

{CHAPTER UPDATES}

Sigma ~ University of Arizona

2011 marked the 60th anniversary of Sigma chapter at the University of Arizona. Patrick Campbell, chapter historian, created a poster detailing the history of the fraternity, which was initially a student group called the *Tachycardiacs*. The poster was presented at the College of Pharmacy's homecoming event.

The chapter set up the **Hope Ornament Tree**, which was a small Christmas tree and decorated it with the ornaments along with facts about breast cancer. When an ornament was purchased, the buyer was asked to sign a placard with the name of a friend or family member who had fought breast cancer, which was then placed on the tree in lieu of the removed ornament.

~Michael Klein, Chapter President



L to R: Patrick Campbell, Sigma Alumnus, Metta Lou Henderson, Elena Almeda

Upsilon ~ University of Houston

Upsilon chapter has had a fall semester full of change. To start we hosted a new signature breast cancer event for our chapter, the Silk Rose Jubilee. This event consisted of a semi-formal dinner and workshop about breast cancer awareness for the new class of pharmacy students.

We started a new Rx Stress Relief Workshop series. The purpose of these workshops was to ease the

anxiety of the new students about pharmacy school.

Wrapping up the semester, we were honored to have a visit from our Grand Council contact, Dr. Alissa Lockwood. It was great having the opportunity to share our plans for Upsilon chapter with Dr. Lockwood and receive advice on how to move forward with our ambitions.

~Yao Hua (Raymond) Lin,
Chapter President



Fall 2012 Issue Chapter Assignments due September 15th, 2012: Alpha Gamma, Alpha Delta, Alpha Epsilon, Alpha Theta, Alpha Nu, Alpha Xi, Alpha Omicron, Alpha Pi, Beta Gamma, Beta Theta Colony, Greater Kansas City Alumni, Phoenix Alumni, Greater Triangle (North Carolina) Alumni, Charleston Alumni.

{CHAPTER UPDATES}

Tau ~ Medical College of Virginia

Our chapter started off the year supporting the Avon Breast Cancer Foundation at a Pink Ribbon Mini Golf Tournament. Many of our members participated in the Making Strides Breast Cancer Walk on Brown's Island. We were able to raise \$925.

In the dead of autumn nights, members of Tau Chapter of Kappa Epsilon "flocked" unsuspecting friends' lawns with plastic pink flamingos as part of a new fundraiser called Flocking Flamingoes. Tau Chapter members even created a short YouTube Video shown to each class to advertise for the fundraiser.

Our biggest fundraiser of the year was Skate for the Cure. Students dressed up in the craziest, funniest, and tackiest 80's gear they could find. We gave out dozens of gift cards and prizes for the Best Dressed and skating contest winners. It was a great night of fun that helped us raise \$1500 for Susan G. Komen.

We also started "Family Fridays" which give members any opportunity to sit down with other members and reflect on their weeks at luntime on Fridays. We also raised money by selling wine glasses etched with VCU School of Pharmacy.

This year our Vice President and Service Chair, Kimberly Reese along with member, Courtney Martin, organized the adoption of three Christmas Tree Angels. Our members really stepped up and we were able to help make Christmas wishes for these



children come true. Our holiday spirit did not stop there. Members socialized and watched Elf at our Secret Santa Social and made goody bags for the breast cancer patients at Massey Cancer Center. Each patient got a breast cancer t-shirt wrapped with a ribbon and candy cane.

We are also making plans to expand our Ovarian Cancer education and awareness projects. Our Service Chair is also working with the Assistant to the Dean to expand our PharmCORP projects to local high school students. Our chapter has also started raising money for the Relay for Life Event which will be held in April. This spring we are also excited to be fundraising for the Young Survival Coalition. Tau Chapter has had a successful year so far and we are excited to be laying the groundwork for an even better year next year.

~Amanda Walls, Chapter President

Fall 2012 Issue Chapter Assignments due September 15th, 2012: Alpha Gamma, Alpha Delta, Alpha Epsilon, Alpha Theta, Alpha Nu, Alpha Xi, Alpha Omicron, Alpha Pi, Beta Gamma, Beta Theta Colony, Greater Kansas City Alumni, Phoenix Alumni, Greater Triangle (North Carolina) Alumni, Charleston Alumni.

{CHAPTER UPDATES}

Psi ~ Ohio Northern University

Psi Chapter at Ohio Northern University has been extremely busy this past semester participating in numerous events and fundraisers around the area utilizing our 143 active members to volunteer as much as possible. This past semester we offered bimonthly faculty blood pressure checks, recycling assistance, volunteered at St. Rita's hospital, and participated in food/toy drives. Our social chairs incorporated many new social events into the semester with activities such as pumpkin carving and a Christmas exchange with the Beta Zeta Chapter! The mixture of new events with our old favorites kept member involvement high and the activities enjoyable for everyone.

On November 3rd we had Melinda Utendorf, a young breast cancer survivor, come share her story of hope and courage to our sisters. There were donations taken at the door and raffle drawings to raise money to donate to the Young Survival Coalition. Throughout that night stories were shared, hearts were touched, and friendships were made.

As winter approached we hosted a College of Pharmacy Christmas party for all students and faculty to attend. There were tables of delicious appetizers and desserts for everyone to enjoy while listening to a string ensemble made up of our fellow pharmacy colleagues playing in the background. The turnout was amazing and it made for a nice relaxing evening.

As spring semester begins our executive committee has many

exciting ideas brewing and the planning has begun. Since our numbers will continue to rise with 46 students potentially becoming members in February, we have many new events planned to allow members to get to know one another better. These events include activities such as a book/movie exchange, Premier jewelry party, and candy making! We also decided to start including educational lectures/inspirational stories at business meetings to give members a sense that they left with much more than they came with.

~ Sandra Rojc, Chapter Historian



Fall 2012 Issue Chapter Assignments due September 15th, 2012: Alpha Gamma, Alpha Delta, Alpha Epsilon, Alpha Theta, Alpha Nu, Alpha Xi, Alpha Omicron, Alpha Pi, Beta Gamma, Beta Theta Colony, Greater Kansas City Alumni, Phoenix Alumni, Greater Triangle (North Carolina) Alumni, Charleston Alumni.

{CHAPTER UPDATES}

Omega ~ University of Missouri- UMKC

Omega Chapter has eagerly fulfilled their duties in the Kappa Epsilon community service projects of Breast Cancer Awareness and PharmCORP. The Breast Cancer Awareness service project was once again of great success during the entire month of October. A bake sale, raffle ticket sale, I.D. badge holder sale, and Chief's football ticket sale all fruitfully raised money to donate to Young Survival Coalition of Kansas City. The annual Bowling for Breast Cancer kicked off on October 22nd with all of the proceeds also going to the Young Survival Coalition of Kansas City.

Our PharmCORP service project has well been under way for the year as several area Kansas City schools have already seen the "Pharmacy as a Profession" presentation that is presented to the classes by Omega members. More schools are on the schedule for later dates in the semester. Other community service events for the year include volunteering at the Shared Care Free Clinic of Jackson County, Project Christmas Angel Tree, and helping set up at the Community Blood Center Blood Drive.

Social events including social hours at local restaurants, attending a Chief's game, and the annual Omega Chapter Christmas party have all been great successes during the fall semester. Many members and prospective members eagerly showed up to all of the events to enjoy a break from school.

This Spring we look forward to the annual Founder's Day and the 3rd Annual Mr. Pharmacy Pageant will be held during February with many more laughs and outstanding performances from the contestants anticipated. Proceeds from the Pageant are donated to a local philanthropy chosen by the Omega Chapter each year.

The recipient of the first Kappa Epsilon Community Service Scholarship of \$500 was awarded this year to an outstanding Omega Chapter member, Brenda (Danielle) Nagel

~Alissa Ridge, Chapter Secretary



Fall 2012 Issue Chapter Assignments due September 15th, 2012: Alpha Gamma, Alpha Delta, Alpha Epsilon, Alpha Theta, Alpha Nu, Alpha Xi, Alpha Omicron, Alpha Pi, Beta Gamma, Beta Theta Colony, Greater Kansas City Alumni, Phoenix Alumni, Greater Triangle (North Carolina) Alumni, Charleston Alumni.

{ALUMNI AFFAIRS}

Alumni Interest Committee Reactivated

This past fall, the Grand Council voted to reactivate the Alumni Interest Committee. The charges of this committee include **supporting the KE National Liaisons**, aide in building a system for a member accessible and searchable **alumni directory**, and **alumni outreach and retention**.

Do you have a special interest in alumni affairs? We are looking for inventive, dedicated committee members from our alumni and collegiate membership. We could love to hear from those of you who have opinions on how to better retain members from graduation into their careers. Can you help us improve our current program on how the fraternity can serve you or how we can encourage alumni to serve the fraternity? Drop a line to our VP of Alumni Development at erin.lingenfelter@gmail.com.



Kappa Epsilon Fraternity – Alumni Dues Invoice 2012

KE Executive Office • 7700 Shawnee Mission Parkway, Suite 201 • Overland Park, Kansas 66202

Phone: 913-262-2749 • Fax: 913-432-9040 • E-mail: kefrat@aol.com • Web: www.kappaepsilon.org

When you were initiated into Kappa Epsilon you made a life-long commitment to promote the values of KE. That special commitment works both ways; KE is committed to you as well. By sharing the information that is relevant to your life, it enables the Executive Office to keep you informed about the profession, draw upon your professional expertise, provide a bank of resources for continuing education, and guard the names and addresses of you and your fellow colleagues. We thank you for your dedication and continued support of KE!

List preferred title Alumni Chapter

Name

Address

City State Zip

E-Mail Telephone

Chapter of Initiation Graduation Year

Date of Birth Name of Spouse

Name and address of Employer:

Does your Employer match donations? ☐ Yes ☐ No Type

1) Are you willing to share your expertise by being part of a speaker bureau or writing an article for the Bond? Speaker's Bureau? ☐ Yes ☐ No Bond article? ☐ Yes ☐ No

Area of expertise:

2) Would you be interested in serving as Alumni Liaison between Chapters and Grand Council? ☐ Yes ☐ No

3) Tell us what is new in your life! Indicate if we can share or publish this information.
☐ Yes ☐ No

Alumni Member Dues \$

\$55 Alum on Rotation; \$60 the first year after graduation; \$75 second year after graduation; and \$85 thereafter. 100% of the dues amount is deductible as a business expense.

KE Fraternity - optional gift \$

This is an optional, non tax deductible gift to the operating fund of the Fraternity. This gift will help provide financial stability and perpetual support for Kappa Epsilon.

KE Foundation - optional gift \$

This is an optional, tax deductible contribution that will provide continuing support for scholarships, educational programming, and grants for chapters/individuals starting worthy pharmacy projects.

KE Merchandise

KE Christmas _____ x \$ 8 \$

Ornament

KE red lapel _____ set(s)x\$30 \$

pins

1 set = 5 pins

(Prices shown in both categories include shipping and handling)

TOTAL \$

Method of Payment: ☐ Master Card ☐ Visa ☐ Check ☐ Money Order

Account Number Expiration Date

Credit Card Holder Name, Address, Zip

List address where credit card statement is received, if different from above.
.....

X Signature of Authorization required for credit card use