

The Bond

Connecting Kappa Epsilon members

{Spring 2011}

Kappa Epsilon in National Leadership

Residency 101...
Tips and hints for a
successful residency plan

Collegiate Updates:
Chapters having fun
while making a difference

The KE Spirit Burns Bright
in Phoenix: **IMPORTANT**
Convention Information
included



{TABLE OF CONTENTS}



9 Residency 101

Are you unsure of the journey through residency?
The tips and tricks to success.

Thank you!

Spring issue contributors: Elizabeth Kort (Alpha Phi), Maggie Hitzeman (Beta), Salvatore Bottiglieri (Alpha Upsilon), Alissa Lockwood (Alpha Delta), Kristin Halstead (Beta Beta), Alpha Medrano (Alpha Psi), Nicole Slater (Alpha Chi), Amanda Fesko (Beta Zeta)

Want to get involved? Deadline for submissions for the Fall 2011 issue is Sept. 11, 2011 E-mail kefrat@aol.com

Also:

An Interview with Hazel

What was it like being the only female pharmacist in a Texan town? 4

The Grab Bag

Top tips for recruitment, philanthropy, and alumni activities 6

ASHP Sightings

We were there. Were you? 7

Awards

These ladies are winners, you can be too! 12

In Every Issue

President's Corner 3

Chapter News 17

The Bond is an official publication of Kappa Epsilon Fraternity, Inc.

The magazine is now published electronically twice annually.

Articles and pictures should be sent to kefrat@aol.com or to the KE Executive Office, 7700 Shawnee Mission Parkway #201, Overland Park, KS 66202-3057. The deadline for submissions for the Fall 2011 issue is September 1st, 2011.

The mission of Kappa Epsilon is to empower its members to achieve personal and professional fulfillment by developing their confidence, self-esteem, interpersonal skills, and leadership vision, and to represent the interest of the membership to health care professionals and the community at large.

Kappa Epsilon National Office:

Nancy Stankiewicz,
Executive Director
Kappa Epsilon Fraternity, Inc.
7700 Shawnee Mission Parkway, Suite 201
Overland Park, Kansas 66212

Phone: 913-262-2749
Fax: 913-432-9040
E-mail: kefrat@aol.com
www.kappaepsilon.org

{PRESIDENT'S CORNER}

Truly be a “KE for Life”

Dear Members and Friends of Kappa Epsilon,

We are excited to present you the first redesigned issue of *The Bond*! We know you'll enjoy the new and exciting changes made to improve the online viewing of the publication. Please consider sharing your time and talents with us by sending in your stories, photographs, and ideas to keep *The Bond* fun and unique!

Kappa Epsilon continues to foster a professional fulfillment and leadership vision amongst our membership. We are proud to present our KE/Merck Vanguard, KE Career Achievement, and five amazing collegiate Zada M. Cooper award

recipients. You can read more about their stories, as well as information on how to be considered for these awards in the future. Additionally, we are interviewing one of our past Vanguard award recipients, Hazel Pipkin, who recently was designated the 2011 Honorary President of the American Pharmacists Association!

Convention is just a few short months away! Are you ready to join us? Kappa Epsilon will meet for our 48th National Convention at the beautiful Arizona Biltmore Resort & Spa in Phoenix, AZ from July 20-23, 2011. Look for registration and exciting convention information in this issue and on our Kappa Epsilon website, www.kappaepsilon.org.

Enjoy a fun and relaxing retreat with us as you embrace the Kappa Epsilon spirit!

It is hard to believe that this biennium is about to come to a close. It's not too late for each of us to honor and uphold the commitment that we made at our initiation and to truly be a “KE for Life.” To our collegiate members, thank you for your never-ending energy and dedication that you share throughout your campuses and communities. To our alumni members, make 2011 the year that you commit to reconnecting with KE! With our Facebook page, website, and new electronic publication of *The Bond* it's easier than ever to stay informed, pay dues, and make a donation to the



Elizabeth Kort
Grand Council President

Fraternity or Foundation.

Thank you for the incredible honor of allowing me to serve as your Grand Council President this biennium. I look forward to our journey together to Phoenix in July!

In the Bond,

Grand Council Officers 2009 – 2011 Biennium

President:

Elizabeth Kort
elizabethkort@yahoo.com
Alpha; Alpha Pi; Omicron;
Tau; Alpha Phi

President-Elect:

Erika Cortes
Pharmerika@yahoo.com
Alpha Delta; Alpha Xi; Alpha
Psi; Beta Alpha;
Beta Epsilon

VP Alumni Development:

Elena Santayana
elena.santayana@gmail.com
Pi; Omega; Alpha Nu; Alpha
Tau; Beta Zeta

VP Collegiate Development:

Alissa Lockwood
alissalockwood@yahoo.com
Xi; Upsilon; Alpha Chi; Beta
Gamma; Beta Theta Colony

VP Member Recruitment:

Maggie Hitzeman
mhitzema@unmc.edu
Mu; Psi; Alpha Omicron

VP Financial Development:

Sloan Fleming
sloan.fleming@vanderbilt.edu
Kappa; Lambda; Alpha
Epsilon; Alpha Lambda

VP Communications:

Erin Lingenfelter
erin.lingenfelter@gmail.com
Beta; Delta; Sigma; Chi;
Alpha Theta

Secretary:

Sal Bottiglieri
sal.pharm.d@gmail.com
Rho; Alpha Gamma;
Alpha Rho

Immediate Past Grand President:

Sara Seng
sara@senginc.com
Alpha Beta; Alpha Omega;
Beta Beta; Beta Delta;
Beta Eta

KE Presides Over APhA

An interview with Hazel Pipkin



I love hearing about Kappa Epsilon members achieving national recognition. I instantly feel proud to be a KE. When I heard that a KE had been designated as the 2011 Honorary President of APhA, I knew I had to interview Hazel Pipkin, RPh for The Bond.
—Erin Lingenfelter,
Grand Council
VP Communications

1) Mrs. Pipkin, Can you tell me a little about yourself?

I graduated from The University of Texas College of Pharmacy in 1954, with a Bachelor of Science in Pharmacy degree. That education opened the door to a wide variety of opportunities that I never expected, including owning a pharmacy, serving in positions of association leadership, and joining the faculty of my alma mater.

I live just outside Austin in the foothills of the Texas Hill Country. My deck overlooks Lake Travis where I spend as much time as possible. I have a daughter (also a KE) who is a pharmacist in San Antonio and a son who is a professor of animal science at West Texas A & M University. He and my daughter-in-law have two handsome sons whom I adore. They love coming to visit grandmother!

2) You are the fourth KE to be Honorary President of APhA. What traits do you think you have in common with the Marjorie Coghill, Gloria Francke and Mary Louise Andersen who also served in this position?

Sharing the position with those three ladies is quite

an honor. For sure we are all KE's and we have all demonstrated a great love for pharmacy. We all entered the profession when women faced a lot of challenges but also an opportunity to be agents of change. I think each of us faced those challenges in different ways, but each found a way to serve.

3) What was it like being one of the first female pharmacists in Texas? Did you have special abilities that made you more popular in Denton, Texas that they had not had before? What difficulties did you come across being one of the first female pharmacists?

I wasn't especially popular in Denton. "Tolerated" might be a better word! However, I was blessed to be hired by Lonnie Yarbrough, an amazing human being and a demanding mentor. He had what was then called a "professional pharmacy," which translated to being small, limited to prescriptions, and an early provider of patient care. Most of my difficulties resulted from my own immaturity and the public not being accustomed to female doctors and pharmacists. So I had to constantly prove that I was

“KE instills in members a belief in professional competency, service, honor, and love. I have tried to incorporate those values into both my professional and personal life.

capable and trustworthy. And, unlike my male counterparts, I had to overlook all of the comments from customers who wanted to wait “until they could see the pharmacist.”

4) Do you have advice for new pharmacists starting their practice?

Appreciate the education you have received. Utilize that education to serve your patients whatever your practice setting. Demonstrate the highest level of practice and ethics. Continue to learn and repay the gifts of professional prerogatives that you have received from your predecessors by serving your profession as well as the public. Support the organizations and colleges that have provided so much that you enjoy.

5) What changes have you seen in the pharmacy world? What trends do you see happening that worry you?

Expanded practice opportunity due in large measure to technology and focus on clinical skills. A worrying trend is too much reliance on technology and a belief that using your knowledge depends solely on WHERE you practice. You can change the world wherever you are.

6) How do national organizations like APhA help pharmacists day to day that we may not know about?

They fight battles that protect and improve the profession as well as the patients we serve.

Unfortunately their members shoulder the burden for their colleagues who for whatever reason choose not to give of their money and time.

7) What have you gained from being a KE? How have you made KE a part of your life?

In college, KE was a place for friendship and support. These things have stayed with me in the years since. KE instills in members a belief in professional competency, service, honor, and love. I have tried to incorporate those values into both my professional and personal life.

8) What easy ways can the typical pharmacist contribute to the advancement of pharmacy practice?

Don't look for easy ways! Recognize that you have a debt to those who have gone before you, have protected, defended, and expanded your profession. You can repay that debt by doing your best every day and by providing opportunity for those who will follow you.

9) What does the future hold for you?

Whatever it brings will be a surprise and an opportunity.

10) Any final words you would like to share?

I have been blessed and I thank all who have helped me along the way. ●

Improve Your Recruitment Ratings



1. FREE FOOD!!!!

That caught your attention, didn't it? A way to a student's heart is definitely through their stomach. Take advantage and invite potential new members out for fun and games at a local pizza place.

2. Show your chapter's sensitive side.

Pick a great cause to support and include potential new members so that they can see how much Kappa Epsilon emphasizes community service.

3. Have a sense of humor!

Be creative and think of a great way to make getting to know the new members fun. Lambda chapter hosts "Speed Dating" to help potential new members and current members get to know each other.

Alumni Alert! How to stay involved after graduation:

1. Pay your dues to stay in good standing and receive the benefits of membership.
2. Join or create an Alumni chapter. Details at www.kappaepsilon.org if you're interested!
3. Get involved with a local chapter. Become a National Liaison!
4. Come to Convention to reconnect, this summer we are going to heat it up at the Biltmore in Phoenix!
5. Apply to become a Grand Council member and bring your ideas to the table.

Pharm-CORP Out of the Box

1. Present pharmacy careers at local career fairs or youth groups.
2. Put together a panel of pharmacists that work in different settings of pharmacy.
3. Team up with your student pharmacy society or state pharmacy organization to help provide additional material, support or services.



{ASHP SIGHTINGS}



Members gather at ASHP 2011

Clockwise from top left, **Andrea Faison** (Lambda) and **Emily Hall** (Tau); Mother & Daughter **Kim Martin** and **Arielle Martin** (Chi); **Brittany Franklin** (Alpha Nu) and **Brittany Dean** (Alpha Nu); **Susan Hobson** (Kappa) **Elizabeth Kort** (Alpha Phi) Grand Council President and **Laura VanScoik** (Kappa); **Liz Alford** (Lambda), **Jessica Stevens** (Lambda), and **Kylie Suggs** (Lambda).



{ASHP SIGHTINGS}



Clockwise from top left, **Madeline Parhalu** (Alpha Omega) and **Brittany Jonap** (Alpha Omega); **Desiree Croteau** (Alpha Phi), **Elizabeth Kort** (Alpha Phi) Grand Council President, and **Kristen Dominik** (Alpha Phi); **Kristin Daniels** (Alpha Beta) with her KE bag at ASHP Midyear 2010; **Donato Fordenza** (Alpha Upsilon), **Kurt Wojak** (Alpha Upsilon), **Neha Nagesh Rao** (Alpha Delta), **Suzanne Stepp** (Alpha Delta) and **Anita Patel** (Alpha Delta); **Sachoy Fowler** (Alpha Pi) and **Ifedapo R. Olajide** (Alpha Pi).

Residency 101

Tips and Hints to Prepare for a Successful Residency Search

We asked Beta Beta member, Kristin Halstead, to share her journey through residency application and ASHP Midyear's Personnel Placement Service (PPS). Here are her tips and hints she passed on for KE members to learn from.

Learn from those who have already gone through the residency process: Ask fellow KE members about their experiences, how they stayed organized, what tools they used, and what thought processes they used to make decisions about residency programs.

Build a professional Curriculum Vitae: Make building a CV less painful and start a working draft of your CV early in your pharmacy schooling. Update it at least annually and more often during rotations. Ask preceptors to review your current CV draft and provide feedback on areas that could be improved.



{CONTINUED}

Do your homework and utilize resources from

ASHP: Do your homework and learn program details in order to avoid asking questions that the answers can easily be found at the program's website or from the residency directory on the ASHP website (www.ashp.org). Create a list of programs that interest you and would support your career goals. Be sure to eliminate programs that do not fit, regardless where the program is located.

Attend local or national residency showcases

such as the one at ASHP Midyear: Attending a smaller showcase can give you the opportunity to speak with programs before ASHP Midyear. This is a great chance to practice your interviewing skills and know what questions to ask of program directors, residents, and preceptors in an environment that is more relaxed than the showcase at Midyear. Additionally, attending showcases allows you to meet the people in the residency and to see if they are genuinely excited to be where they are. Learn to read between the lines, you can weed out programs with issues if you listen carefully. Have your CV and business cards ready, know the

requirements of the programs you speak with, and come ready with formed questions specific to each program. After you talk to a program, step aside and write down some of your impressions and notes about the program before moving on to the next. Ask for the business card of the person you spoke to in case you have future questions, and be sure to send them a note thanking them for their time.

Letters of Recommendation: Contact faculty from your school and past preceptors who knew you well to request letters of recommendation. Be mindful that writing letters take time, so help make it easier for your references. Make a couple short notes about each program they would be writing letters to. Include stamped and addressed envelopes, required recommendation forms, and a copy of your CV for them to review. The sooner you can get this information to a reference, the better. Many applications are due shortly after the holidays and you don't want them to feel rushed.

Keep an open mind and go out there and show what KE's can do! Good Luck!



Kristin Halstead, Beta
Beta

“**Have your CV and business cards ready, know the requirements of the programs you speak with, and come ready with formed questions specific to each program.**”

More Quick Tips

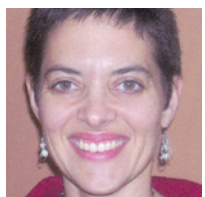
- **Network within KE.** Contact KE Alumni that have gone through residency and get their advice. They're happy to share their experience with you.
- **Imagine the questions you will be asked.** Have some practiced answers ready to help keep you calm.
- **Be unique!** Find a way to different find the pack.

{TOP HONORS}

KE leaders honored with awards

Zada M. Cooper Scholarships Awarded

The Zada M. Cooper Scholarship was established in 1955 in honor of Kappa Epsilon's founder, Zada M. Cooper. Recognizing superior achievement, the scholarship is supported by a small percentage of each member's national dues in addition to KE members who donate to the scholarship fund. The award consists of up to six \$500 scholarships presented annually to active **collegiate** members by the KE Foundation. We are pleased to announce scholarships being awarded to (clockwise) **Ashlyn Bozeman** (Alpha Delta), **Athena Brand** (Xi), **Kristen Johnson** (Alpha Phi), **Michele H. Simmons** (Alpha Rho), and **Erin Woodard** (Alpha Delta).



Dr. Cameron C. Lindsey Receives KE Merck Vanguard Leadership Award



Kappa Epsilon Foundation, Inc. along with Merck proudly announces that **Dr. Cameron C. Lindsey**

(Omega) has been selected as the 2011 recipient of the KE/Merck Vanguard Leadership Award. The award honors an exemplary pharmacist for multiple achievements within the discipline. Dr Lindsey is a tenured professor, at the School of Pharmacy, Division of Pharmacy Practice and Administration at the University of Missouri-Kansas City.

Dr. Kimberly Broedel-Zaugg Recieves the KE Career Achievement Award



We are proud to announce that **Dr. Kimberly Broedel-Zaugg** (Psi) has been selected as the recipient

of the Fraternity's 2011 Career Achievement Award. This award honors one distinguished pharmacist annually and cites the member's contributions to the profession of pharmacy. As an adjunct to the award, Dr. Broedel-Zaugg was nominated for the Profession Fraternity Association's Career Achievement Award. Dr. Broedel-Zaugg is a tenured professor at Ohio Northern University in Ada, Ohio and has served for four years as their Director for Continuing Education.

Do you want to be a part of *The Bond*? Send your photos, article ideas, or member updates to kefrat@aol.com.

{AWARD ANNOUNCEMENTS}

Nominate your colleagues for these prestigious awards

KE/Merck Vanguard Leadership Award

Awarded to exemplary alumni who have contributed both professionally and within their community.

Nominations due October 15th annually

Career Achievement Award

Active alumni member noted for their professional accomplishments.

Nominations due October 15th annually

Linda Rodgers Memorial Award

Honors a KE member who exemplifies Linda's characteristics of leadership, dedication, diplomacy, friendship, and inspiration to others. *\$200 award.*

Nominations due May 15th in odd years (Alumni)

Nominations due May 15th in even years (Collegiate)

Zada Cooper Scholarships

Recognizes superior achievement and is presented annually to active collegiate members. *\$500 scholarship awarded.*

Applications due November 15th annually

KE/AFPE Nellie Wakeman Fellowship

Monetary award used to encourage members to pursue an advanced degree in a college of pharmacy graduate program. *\$6000-7500 award.*

Applications due February 1st annually

Foundation Grants

Provides members and chapters with incentive money for innovative projects in the profession of pharmacy.

May apply anytime!

Give to KE today

In a continuing effort to provide financial stability and perpetual support for Kappa Epsilon Fraternity and the Kappa Epsilon Foundation, please consider making a donation to one or both of these entities. Let us speak with one voice, in strategy and purpose, and share our resources to promote the future of Kappa Epsilon.

My gift to the Fraternity is \$..... My gift to the Foundation is \$.....

Gifts to the Foundation are tax-deductible.

**Please make checks payable to Kappa Epsilon Fraternity and/or Kappa Epsilon Foundation.
or pay by credit card:**

Mastercard/Visa #:..... Exp:.....

Name:.....

Street, City, State, Zip:

Send form to: Kappa Epsilon, 7700 Shawnee Mission Pkwy, #201 Overland Park, KS 66202

You may also pay via Pay Pal at www.kappaepsilon.org

Shine in Phoenix

The KE Spirit Burns Bright in Phoenix, July 20-24th, 2011

Registration deadline for Kappa Epsilon's 48th National Convention is June 20th, 2011. The KE web page (www.kappaepsilon.org) has all the information you need for a successful convention including chapter requirements for attendance, the amazing amenities of this world famous resort, attire, chapter and alumni opportunities for Marketplace tables, tentative agendas, description of the convention t-shirt, and proposed amendments to the bylaws. We can't wait to see you for "The KE Spirit Burns Bright in Phoenix" July 20-24th, 2011!



**KE Registration Deadline
June 20, 2011. Complete
the registration form on the
following page today!**



48th National Kappa Epsilon Convention

Arizona Biltmore – Phoenix, Arizona

July 20 to July 23, 2011 (Check-out is Sunday, July 24, 2011)

KE Registration Deadline June 20, 2011 Hotel Guest Room Deadline June 20, 2011

REGISTRATION FORM

Name:

Chapter:

Address where you receive correspondence:

City: State: Zip:

Email address:

Daytime phone:

Emergency contact and phone:

Date of birth:

Licensure number for CE credit:

Dietary restrictions:

Special Needs:

Registration Status for the Convention. Select one:

- ☐ Guest ☐ Rotation alum/final professional year
☐ Collegiate Delegate* ☐ Alumnus Delegate ☐ Chapter Advisor
☐ Past President ☐ Collegiate Attendee ☐ Alumnus Attendee
☐ Associate Member ☐ Grand Council/Foundation

*Each chapter is required to send one delegate to avoid probation. If two delegates attend, the registration fee for the first delegate is \$275 and the second delegate is \$125. Roll call/credentials reports are done each session. Both delegates must attend all scheduled programs and activities or the chapter will be invoiced for the balance of the full collegiate fee.

HOTEL: All sleeping rooms must be secured at the Arizona Biltmore prior to June 20, 2011 to receive the \$129 ++ rate. For Hotel Reservations select one of these: 800-950-0086; www.arizonabiltmore.com; or direct link on the KE website. You must provide the Group Code "KAPEPS." First & last night's room deposit required. By registering, you permit the Biltmore to share that information with Kappa Epsilon.

Registration payments and this form are to be submitted by June 20, 2011 to Kappa Epsilon Fraternity, Inc., 7700 Shawnee Mission Parkway, Suite 201, Overland Park, KS 66202-3057.

Questions? Telephone: 913-262-2749. Fax: 913-432-9040
Cancellations received by July 1, 2011 will be refunded, less \$50.
No Cancellations after July 1, 2011.

Registration - Full Convention Fees:	(Wed-Sat)	Amount Paid
1st Collegiate Delegate*	\$275 (circle if 1st delegate)	\$
2nd Collegiate Delegate*	\$125 (circle if 2nd delegate)	\$
Collegiate Attendee	\$275	\$
Alumnus on rotation / final professional year	\$275	\$
Alumnus Full Fee (Dues Are Current)	\$325	\$
Alumnus Full Fee (Dues Are Not Current) (add dues, 60, 75, 85)	\$325	\$
Non-member Full Fee - Guest (all meals and events)	\$350	\$

Member Registration - Daily Fees: Alumni owing dues, add to total below please.

Wednesday, July 20, 2011	\$50	\$
Thursday, July 21, 2011	\$120	\$
Friday, July 22, 2011	\$65	\$
Saturday, July 23, 2011 (includes banquet)	\$150	\$
Guest Fee for Banquet Only, Saturday July 23, 2011	\$60	\$
Late Registration Fee (after June 20, 2011): Full or daily fees, plus \$50 late fee		\$
Convention T-Shirt	\$15	\$
<input type="checkbox"/> XS <input type="checkbox"/> SM <input type="checkbox"/> M <input type="checkbox"/> LG <input type="checkbox"/> XL <input type="checkbox"/> XXL		

Payment Method:

☐ Check is enclosed.

☐ Credit Card: (☐ Visa or ☐ Mastercard)

Card Number: Expiration

Signature required for credit card authorization:

.....

TOTAL \$

{CHAPTER UPDATES}

KE Volunteerism in the Alpha Psi, Alpha Chi and Beta Zeta Chapters

Palm Beach Atlantic University

The Alpha Psi chapter volunteered for a water station at the annual Palm Beach Marathon. At our Christmas themed water station, we decked the halls (or in our case tables) with garland, stockings and Christmas décor. We even had red and green cups! The event started at 6:00 am which was especially crazy because it was during finals.

Regardless of the early start, we had a great turnout of KE members and a few other brave souls to bear the cold



Alpha Psi chapter at Palm Beach University

weather. Many of the competitors said that we were one of the best volunteer stations of the

event. We all had a blast and were glad to have a study break! To top our year off, we also induct-

ed 18 new members this year!

—Alba Medrano,
Chapter President

{UNICORN NEWS}

1969 Susie Bartle-
may, RPh (Xi) is living in Allan, TX and is currently starting a new job and looking forward to traveling in her motor home enjoying the outdoors. If you would like to reconnect with Susie, email her at sebrph@att.net.

Jane Hammock, RPh (Pi) currently works with Marsh Pharmacy in Brownsburg, IN and has held state and national offices for Kappa Epsilon. She recently trained a newly hired KE for Marsh. If you would like to reconnect with Jane, email her at PURxJane@sbcglobal.net. GO BOILERS!!

Fall 2011 Issue Chapter Assignments due September 1st, 2011:

Alpha, Beta, Delta, Kappa, Lambda, Mu, Omicron, Pi, Beta Delta, Beta Epsilon

{CHAPTER UPDATES}



Alpha Chi chapter at Shenandoah University

Shenandoah University

Alpha Chi has accomplished a great deal this past year! Our 13 members, donated over \$1500 to the Young Survivor's Coalition by hosting fundraising events such as Cocktail for a Cure, Bowling for Boobs, and our Annual Survivor's Dinner. At the dinner, we honored 18 local breast cancer survivors with over 100 guests helping to celebrate their amazing lives.

We had a game themed event with the popular game show, "Minute to Win It" for recruitment. We had a great turnout and we are looking forward to the boost in membership. In April, we will hold our famous Flamingo Flocking and "flock" the faculty and student mail boxes at the school. We also go into the community and flock lawns for a fee. Everyone enjoys this time of year, as flocking is KE's signature event and we receive great support from the faculty, students, and the community!

—Nicole Slater, Chapter President



Beta Zeta chapter at University of Findlay

University of Findlay

Hello from Beta Zeta! We had a great fall semester, full of volunteering, fundraising, and fun events. Many KE members have participated in local medication collection days, counting and sorting thousands of unwanted pills. Four of our students and faculty are embarking on a medical mission trip to Haiti this March. We are excited to support them through fundraising and donating over-the-counter products and various medical supplies. We are also well underway in planning for spring recruitment, and hope to encourage many more pharmacy students to join KE! For our spring service project we will be teaming up with the Poison Control Center and local schools to increase awareness about hazardous substances found within the home. We hope to make this semester a great one!

—Amanda Fesko, Chapter Historian

{UNICORN NEWS}

2005 Kim (Menard) Finfera, Pharm.D.

(Psi) is employed by HospiScript Services, LLC as a Clinical Pharmacist in Hospice and Palliative Medicine, in Pemberville, OH. If you want to reconnect with Kim, email her at kim.menard@gmail.com.

2008 David Bondarenka (Alpha Upsilon)

is currently living in Charleston, SC and recently became engaged to Lisa Godfrey Esq. He is employed by Medical University of South Carolina as a Clinical Pharmacist. If you would like to reconnect with David, email him at davidbondarenka@gmail.com.

Kappa Epsilon Fraternity – Alumni Dues Invoice

KE Executive Office • 7700 Shawnee Mission Parkway, Suite 201 • Overland Park, Kansas 66202

Phone: 913-262-2749 • Fax: 913-432-9040 • E-mail: kefrat@aol.com • Web: www.kappaepsilon.org

When you were initiated into Kappa Epsilon you made a life-long commitment to promote the values of KE. That special commitment works both ways; KE is committed to you as well. By sharing the information that is relevant to your life, it enables the Executive Office to keep you informed about the profession, draw upon your professional expertise, provide a bank of resources for continuing education, and guard the names and addresses of you and your fellow colleagues. We thank you for your dedication and continued support of KE!

List preferred title Alumni Chapter

Name

Address

City State Zip

E-Mail Telephone

Chapter of Initiation Graduation Year

Date of Birth Name of Spouse

Name and address of Employer:

Does your Employer match donations? ☐ Yes ☐ No Type

1) Are you willing to share your expertise by being part of a speaker bureau or writing an article for the Bond? Speaker's Bureau? ☐ Yes ☐ No Bond article? ☐ Yes ☐ No

Area of expertise:

2) Would you be interested in serving as Alumni Liaison between Chapters and Grand Council? ☐ Yes ☐ No

3) Tell us what is new in your life! Indicate if we can share or publish this information.
☐ Yes ☐ No

Alumni Member Dues \$

\$47 Alum on Rotation; \$60 the first year after graduation; \$75 second year after graduation; and \$85 thereafter. 100% of the dues amount is deductible as a business expense.

KE Fraternity - optional gift \$

This is an optional, non tax deductible gift to the operating fund of the Fraternity. This gift will help provide financial stability and perpetual support for Kappa Epsilon.

KE Foundation - optional gift \$

This is an optional, tax deductible contribution that will provide continuing support for scholarships, educational programming, and grants for chapters/ individuals starting worthy pharmacy projects.

KE Merchandise

KE Christmas _____ x \$ 8 \$

Ornament

The 75 Years of _____ x \$25 \$

Kappa Epsilon
Fraternity

*(Prices shown in both categories
include shipping and handling)*

TOTAL \$

Method of Payment: ☐ Master Card ☐ Visa ☐ Check ☐ Money Order

Account Number Expiration Date

Credit Card Holder Name, Address, Zip

List address where credit card statement is received, if different from above.
.....

X Signature of Authorization required for credit card use