



The Bond

Fall 2015



A publication of
Kappa Epsilon Fraternity, Inc.

KAPPA EPSILON NATIONAL OFFICE

Cindy Baugh,

Executive Director

Kappa Epsilon Fraternity, Inc.

7700 Shawnee Mission

Parkway, Suite 201

Overland Park, Kansas 66202

Phone: 913-262-2749

Fax: 913-432-9040

E-mail: director@kappaepsilon.org

www.kappaepsilon.org

Office Hours:

Monday – Thursday

8:30 a.m. – 5:00 p.m.

(Intermittent Fridays)

The Bond is an official

publication of Kappa

Epsilon Fraternity, Inc.

The magazine is published

two times annually.

Articles and pictures

should be sent to the

KE Executive Office,

7700 Shawnee Mission

Parkway Suite 201

Overland Park, KS 66202-3057

or to director@kappaepsilon.org

The mission of Kappa

Epsilon is to empower

its members to achieve

personal and professional

fulfillment by developing

their confidence, self-esteem,

interpersonal skills, and leadership

vision, and to represent the interest

of the membership to health

care professionals and the

community at large.

TABLE OF CONTENTS

Officers	2
Grand Council Connections	2
Message from Grand President.....	3
Message from Grand Secretary.....	4
History Tidbit	5
Chapter updates:	
Alpha	6
Beta	7-8
Rho	9
Sigma	10
Tau.....	11-12
Alpha Nu.....	13-14
Alpha Phi.....	15
Alpha Psi	16
Beta Epsilon	17
Beta Theta	18
Beta Mu	19-20
Beta Rho	21
Convention Highlights	22-23
Scholarships/Awards.....	24
National Project	25
100-Year Challenge	26
Get to know Grand Council	27-30
Connect with KE	31

GRAND COUNCIL CONNECTIONS

President

Sara Snow, sarasnow23@gmail.com

Alpha, Sigma, Alpha Epsilon,

Alpha Theta, Alpha Nu, Beta Rho.

President-Elect

Sal Bottiglieri, sal.pharm.d@gmail.com

Alpha Omega, Beta Beta, Beta Gamma,

Beta Iota, Beta Tau Colony.

VP Alumni Development

Lauren Clouse, laurenaclouse@gmail.com

Beta, Pi, Alpha Phi, Beta Alpha, Beta Mu.

VP Collegiate Development

Morgan Fleming, mafleming@presby.edu

Psi, Alpha Delta, Alpha Lambda, Alpha

Psi, Beta Epsilon.

VP Member Recruitment

Christine Kane, kane4130@gmail.com

Kappa, Lambda, Alpha Xi, Beta Kappa,

Beta Nu.

VP Financial Development

Chelsea Burns, cvsburns@gmail.com

Rho, Tau, Alpha Rho, Beta Eta, Beta Omicron,

Beta Sigma Colony.

VP Communications

Kathy Nguyen, kknpharmd@gmail.com

Alpha Gamma, Alpha Pi, Alpha Chi, Beta

Zeta, Beta Theta.

Grand Secretary

Kara Willis, kmillerk2001@yahoo.com

Delta, Mu, Alpha Beta, Alpha Omicron,

Beta Lambda.

Immediate Past Grand President

Alissa Lockwood,

lockwood.alissa@gmail.com

Xi, Upsilon, Chi, Omega, Beta Pi.

MESSAGE FROM THE GRAND PRESIDENT

Welcome to the 2015-2017 biennium of Kappa Epsilon! I am beyond excited to work with the wonderful group of individuals elected by Grand Chapter to serve on the 2015-2017 Grand Council, and I know you will love working with them too!

Grand Council has hit the ground running and is building off the momentum of our amazing 50th National Convention which occurred July 22-25, 2015 in Orlando, Florida.

The focus for this biennium is to strengthen the existing foundation under KE's "castles in the air" and to build new foundations to enable KE to successfully move toward the historic landmark of our 100-year anniversary.

These foundations that we will build and strengthen in the upcoming biennium include:

- The revamping of the National Liaison Program with the addition of a dedicated committee to broaden the reach of the National Fraternity to existing Collegiate Chapters

- The implementation of a KE National Project that continues to honor the late Linda Rogers, Past Grand President, while at the same time focusing on a cause that is sorely in need of education, awareness and funding—Ovarian Cancer. Furthermore we are challenging alumni and collegiate chapters to contribute to a philanthropic project of their choice and present a poster detailing their efforts during 2017 convention.

- The initiation of an Alumni Mentoring Program to increase networking opportunities between alumni and collegiate members

- The development of an extensive KE membership database through the implementation of the new members only portion of the KE website that will be launched later this year.

The next several years leading up to the 100th Anniversary Celebration of Kappa Epsilon are going to be extremely busy and momentous, as

the 100 Year Anniversary Committee is busy planning exciting events for future conventions and for the entire year of 2021!

I am pleased to be able to announce the locations of 2 future conventions. The 2017 Convention will take place in New Orleans, Louisiana on August 2-5, 2017, and the 2021 Convention, which will celebrate 100 Years of KE, will be in the Washington, DC area!

Over the next biennium and as we move towards 2021, I challenge each of you to work together to immortalize Kappa Epsilon by building and strengthening our foundations in order to create permanent things that we can pass on to the next generation of KE members.

In the BOND,

Sara Snow

*Kappa Epsilon
Grand Council President*

MESSAGE FROM GRAND SECRETARY

Greetings Kappa Epsilon! My name is Kara Willis and I have been elected Grand Secretary for the 2015-2017 biennium. My role as secretary includes keeping records/minutes of any important Fraternity matters including quarterly conference calls. Also as secretary I keep record of any Grand Council votes, and keep in contact with my council connections. Another important part of my role as Secretary is to be the national liaison for the National Project Committee.

The National Project Committee has two main focuses this biennium Breast and Ovarian Cancer.

- The focus for Breast Cancer is always to raise awareness, but this biennium we would also like to focus on providing our members education on ways to self-check and on education of Breast Cancer research. We have challenged the chapters to raise \$250 to donate

to a Breast Cancer organization of their choice.

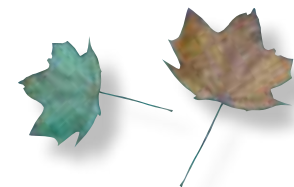
- The focus for Ovarian Cancer is to raise awareness. We have requested chapters hand out teal ribbons and information about Ovarian Cancer. We have chosen a smaller goal to allow chapters to raise awareness about Ovarian Cancer without the time to plan for a larger campaign. We also want to chapters to have plenty of time to plan events for September 2016 (September is Ovarian Cancer Awareness Month).
- At convention we voted to remove PharmCORP from our national projects. However, any chapter that has a strong program and would like to continue it is free to do so.
- As Sara mentioned we would like all chapters to focus on a local philanthropic event of their choice.

If your chapter has selected the event or organization to work with please contact one of the National Project chairs. They are Constance Terrell at constancenterrell@gmail.com, Kristina Rosus at kristina.rosus@gmail.com, you can also contact me at kmillerk2001@yahoo.com with information. This is to keep track of each chapter's projects.

I am looking forward to seeing what all of our great, dedicated chapters can do for their communities in this biennium. If there are any questions about our National Projects do not hesitate to contact our chairs Constance Terrell at constancenterrell@gmail.com, and Kristina Rosus at kristina.rosus@gmail.com, or Grand Council Liaison Kara Willis at kmillerk2001@yahoo.com.

HISTORY TIDBITS

Metta Lou Henderson (Sigma) Past Grand President



Honorary Members of Kappa Epsilon

Our Kappa Epsilon bylaws (Article II, Section 2(h)) defines a Honorary Member as an individual who has given distinguished service to the profession of pharmacy and/or Kappa Epsilon Fraternity. Section 3(h) explains the procedure for the granting of honorary membership. A collegiate or alumni chapter, after approving the candidate by a two-thirds vote of chapter members in good standing present and voting, then submits information about the individual to Grand Council for their vote. The Grand Council vote must be unanimous and is reported back to the chapter who may then invite the candidate to membership. An honorary member may affiliate with any collegiate or alumni chapter and does not pay national dues. He or she cannot serve as a member of Grand Council, as a delegate to convention

or chair a national committee. The category of honorary member became a part of our bylaws during the 1953-55 bylaws revision.

Kappa Epsilon has five honorary members:

Thelma Colburn was recommended by Phi Chapter and initiated in 1958. She was the secretary of the Alabama Board of Pharmacy and one of the first women to serve in this capacity in any state.

Dr. Mary Estelle Caldwell was recommended by Sigma Chapter and initiated in 1960. Although, she was not a pharmacist, she was a professor in the college of pharmacy and had accomplished many first for women in the health sciences.

Ina G. Black was recommended by Alpha Beta chapter and initiated in 1972. She served as a faculty member

for many years in Oklahoma and was instrumental in advancing and supporting women pharmacists.

Mary Munson Runge was recommended by Alpha Nu and initiated in 1978. She graduated from Xavier University prior to a KE chapter on that campus. Mary was the first woman and first African-American to become president of the American Pharmacists Association.

Marily Rhudy was recommended by Grand Council and initiated in 1991. She was the second woman president of APhA and another individual who held numerous offices and promoted women pharmacists.

Thelma Colburn, Mary Caldwell, Ina Black, and Mary Runge are deceased.



CHAPTER UPDATES - ALPHA

Alpha: University of Minnesota

It has been a busy year for the Alpha chapter of Kappa Epsilon at the University of Minnesota! We began our year with a fundraiser, called PancaKE, selling pancakes and sausages to faculty, staff, and professional students, including the new first year pharmacy students. It was a great way to showcase our members. Our members donned aprons and were able to talk about the exciting things KE has planned for this year to prospective members, while pancakes were made to order. We are excited to have more fundraising opportunities such as these in the upcoming year.

Our spotlight outreach event that reflects Kappa Epsilon's national philanthropy is the

Making Strides Against Breast Cancer Walk through the American Cancer Society. Our team, the Kappa Epsilon Crusaders, is excited to participate in the walk and will raise money towards the awareness of and research for a cure for breast cancer.

The Alpha chapter is also planning another exciting, new project to

promote professional development of our members. Our chapter will be utilizing one of our faculty advisors, Dr. Ann Philbrick, to create an outreach event for our members to offer immunizations in the community at a local group home. This is an opportunity for our members to provide immunizations in a manner that will develop their professional skills as future providers.

As a chapter, we are excited to report that our open meetings have been very well attended and we are looking forward to welcoming new members to our fraternity. Our chapter goals are to promote a strong connection between our members, while participating in philanthropic outreach and events to develop our members as leaders within the pharmacy profession.



CHAPTER UPDATES - BETA

Beta: University of Nebraska Medical Center

Greetings from Beta Chapter at the University of Nebraska Medical Center in Omaha, Nebraska! We are excited to begin a new school year, especially after attending convention this summer in Orlando. Jocelyn Utecht, Beta chapter president, and Anna Kokrda, Beta chapter president-elect, were able to represent our chapter at convention this past July. We are excited to begin implementing projects to raise awareness for Ovarian Cancer, our new national project.

So far this year, we have had several meetings and a back-to-school BBQ, all geared toward recruiting new members for the upcoming year. We have had a

great turnout at each of our meetings and events and so far have about 30 people signed up to attend our next meeting, where the potential new members will fill out intent-to-join forms. We have dates for our potential new member and initiation ceremonies and are excited to begin the recruiting process.

This semester, we will also be assigning our new members a "big," who will serve as a mentor for each new member within Beta chapter. Our new members will find out who their bigs are following the initiation ceremony. This year, we are also planning on having a special social, such as a game night, following the initiation ceremony to give the bigs/littles a chance to get to know each other.

As a chapter, we have started fundraising for the new school year. We sold drug cards to the incoming P1 students, which they will use for one of their classes this semester. This fundraiser went very well and should allow us to continue providing food at our meetings

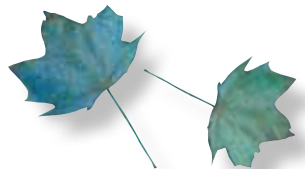


and support our chapter's events. We are also planning to sell Breast Cancer Awareness t-shirts in October. We are also planning to sell Heritage Falls candles, white coat pocket clipboards, and Beta Chapter t-shirts.

Each year, we participate in the Susan G. Komen Race for the Cure. In previous years, we have handed out informational pamphlets to help educate patients about Breast Cancer Awareness. This year, we will be running the first aid for the race. We will also be sending volunteers to help with other areas of the event to make an even larger impact for breast cancer awareness.



continued on next page



BETA CONTINUED . . .

Traditionally, we as a chapter take a few meetings each year and use the time to make a difference in our community. For our October meeting, we are planning on making blankets for the Nebraska Humane Society. During a meeting later this semester, we are planning to decorate Christmas cards for nursing home residents and military service members.

For the spring semester, we are planning to decorate Valentine's Day boxes for pediatric patients at Nebraska Medicine. We also have an annual event called Pink Day, which is an event to raise money and awareness for breast cancer. This year, we will also be using this event to raise awareness for Ovarian Cancer to support our new national project.



In the spring, we also sell shamrock pins to raise money for muscular dystrophy. This event was started a few years ago for a KE member who had a family member with muscular dystrophy. Also in the spring, we volunteer for the Ronald McDonald house. We pick an evening to prepare a meal for the families who are staying in the house who have a child in the pediatric department at Nebraska Medicine.

As a chapter, we are very excited for the upcoming events that this year will bring. We are hoping to initiate a great group of new members this semester. We are excited to begin new projects for ovarian cancer as well as continuing with past projects. This year, we are striving to grow as a chapter and continue to be involved in our community and our school.



CHAPTER UPDATES - RHO

Rho: University of Cincinnati

Hello from the Rho Chapter at the University of Cincinnati, James L. Winkle College of Pharmacy! As our chapter grows, our activities, outreach, and fundraising success grow with us. We started off the 2014 year with recruitment events, including



Kappaccinos with Kappa, Kupcakes with Kappa, and dinner at our on-campus restaurant, Katskellar. Through these



conversation-based activities, we really had an opportunity to talk about why we joined KE and what the organization means to us. After successful fall recruitment, we added 19 new members to our chapter who were all excited and enthusiastic about getting involved.

In October of 2014, we held our annual Breast Cancer Awareness Week. The week consisted of the Making Strides Against Breast Cancer Walk, events which culminated in Drink Pink, an event held at a local restaurant with specialty drinks, and a raffle donating all proceeds to the Young Survival Coalition.

During the fall semester, we also had the opportunity to attend and support Girls on the Run, an organization founded upon getting young girls active at a young age. As we have for many years, we tasked some of our new members in planning and executing an activity to Go Red for American Heart Association month. This year, two of our new members led a committee in organizing a weekly activity for the whole month, including a social media campaign with snack incentives and encouraging peers to "Go Red!" with their clothing one day to increase awareness.

Organizing and orchestrating Mr. Pharmacy is an annual tradition that is always a lot of fun and this year did not disappoint. With counting challenges, modeling for best "Skills Lab" attire, question sessions, and a talent portion, Mr. Pharmacy was a fun night for all in attendance, including Grand Council's Chelsea Shields!



This past summer, we had six members attend Kappa Epsilon's 50th National Convention. Not only did they have a wonderful time with each other and meeting tons of people from other chapters, they have returned full of knowledge, ideas, and energy. We look forward to incorporating Ovarian Cancer Awareness into our Breast Cancer Awareness Week events. As we start recruitment events in the coming weeks, we hope to share our passion for this organization with future KE members. We are excited to see how our new members will build our chapter and we are confident that they will be an engaged, innovative, and passionate group of student pharmacists who will carry this Kappa Epsilon legacy into the future at our college.

CHAPTER UPDATES - SIGMA

Sigma: University of Arizona

Greetings from Sigma Chapter at the University of Arizona in Tucson, Arizona! Our chapter is beginning a new semester and gearing up for rush. We are eager to incorporate ideas we learned about at the National Convention!

During our previous spring semester, our chapter's biggest community

outreach was PharmCORP. Sigma members visited three local high schools and presented to 536 students throughout the previous year. The presentation to students included the variety of careers pharmacists may have, general guidelines to apply to pharmacy school, and a medicine versus candy game.

To help support our local community, our chapter held Penny Wars with all the proceeds donated to the Tucson Food Bank. Penny Wars is a competition between the pharmacy school classes using the competitive spirit for a great cause. Pennies are positive values and help a class win, yet competing class can sabotage by donating other denominations of money, which are negative values.



This semester brings many excited and new events that we are thrilled to start. Sigma chapter strives to make an impact on campus and in our community through our social and philanthropic events.



CHAPTER UPDATES - TAU

Tau: Virginia Commonwealth University Greetings from the Tau Chapter of Kappa Epsilon at Virginia Commonwealth University School of Pharmacy in Richmond, VA! Each year, our chapter continues to grow. This past spring, we inducted 30 new members, bringing our total up to 94 active members.

This past year, we have had many events to serve the community and

all wore our pink breast cancer awareness shirts on every Wednesday because they read, "On Wednesdays We Wear Pink."

We also held our annual Skate for the Cure event at the end of October. This is an 80's themed event

where we raise awareness and funds for the Susan G. Komen Foundation – this year we raised and donated \$2500. As a Chapter, we also participated in the Richmond Making Strides event – a walk/run to raise funds and awareness for breast cancer research.

This past spring, we held our second annual 5KE, a 5K benefitting our chapter's scholarship in memory of our late professor and Tau Chapter alumna, Dr. Amy Rudenko, who passed away from

raise awareness. To start off Breast Cancer Awareness month, we hosted our annual Breast Cancer Awareness Day. Our chapter designed t-shirts and invited guest speakers to share information and first-hand stories with our chapter and the entire school. Throughout the month of October, we

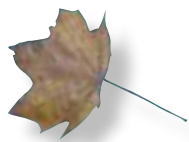


breast cancer. We had 74 participants, including students, faculty, alumni, and friends of Dr. Rudenko.

In addition, we were able to volunteer our time at the Massey Cancer Center, where we simply spend time with patients who are getting treatment. We try to get their minds off of the their current situations by making different crafts. We decorated pumpkins for the month of October, and in December we made ribbon wreaths with the patients.



continued on next page



TAU CONTINUED . . .

This fall we plan to do water color painting, pumpkin decorating, and flower wreaths.

In February, we had our third annual Teal Day in support of Cervical and

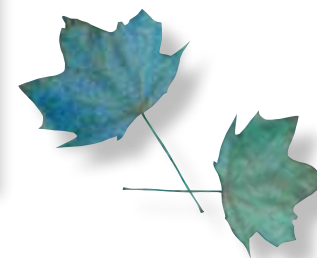
Ovarian Cancer Awareness. We wore our teal shirts, provided teal colored baked goods, and had posters providing participants with information about Cervical and Ovarian Cancer. School

of Pharmacy students, faculty, and

administration all came out to support this cause. Due to the change in KE's national philanthropy, we are having our Teal Day this September, in

honor of Ovarian Cancer Awareness Month. We redesigned teal shirts, and have already raised \$280 for the Ovarian Cancer National Alliance.

This up coming year, we are pleased to announce that we will be volunteering at the Ronald McDonald House. We have planned dinners every month, where we will provide dinner to families staying at the house. We will also have cookie hours every month, where we will bake cookies and leave them for the families to eat as they come and go. We are excited for this new service event!



CHAPTER UPDATES - ALPHA NU

Alpha Nu: Xavier University

Greetings from the Alpha Nu Chapter of Kappa Epsilon! Our chapter is located in New Orleans, Louisiana at Xavier University College of Pharmacy. This past year, the members of Alpha Nu have worked diligently to align our efforts with the national initiatives of KE and our College of Pharmacy. Alpha Nu has maintained a strong presence throughout Xavier's College of Pharmacy and the community through our fundraisers for charitable organizations such as the Susan G. Komen® Breast Cancer Foundation, mentoring children through the PharmCORP program, tutoring children in our community, providing seminars on breast cancer health, and pharmacy career opportunities. Our fundraising efforts have included: selling pharmacy t-shirts, selling blankets to current students and alumni of our university and College of Pharmacy, selling Breast Cancer ribbons and shirts for breast cancer awareness.

Our most successful events within the College of Pharmacy came about during the month of October for breast cancer awareness. Throughout the month of October, we sold breast cancer ribbons that our chapter members made and breast cancer t-shirts to raise awareness about breast cancer. Through these efforts, we were able to raise over \$600



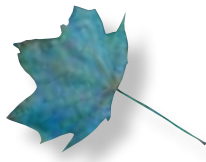
to donate to the Susan G. Komen® Breast Cancer Foundation. We also had a Paint the COP PinKE day, where students wore pink and gathered with the Dean of Xavier's College of Pharmacy,

Dr. Kathleen Kennedy. One of the most inspiring days of October, during our breast cancer month of activities, was inviting a breast cancer survivor to speak about her journey of being diagnosed with breast cancer and her determination to overcome the disease. Members of Alpha Nu also showed our support of breast cancer awareness by volunteering at the annual Race for the Cure, Susan G. Komen Breast Cancer Walk.

This past year, Alpha Nu implemented its PharmCORP program by volunteering at the Boys and Girls Club of New Orleans. We informed and educated children about the integral role a pharmacist plays in healthcare, the various career opportunities that pharmacy has to offer, tips on how to become a pharmacist, and the paths

that our members took to begin their careers in pharmacy. For most of our members, these efforts began as early as our middle school years. We also emphasized the importance

continued on next page



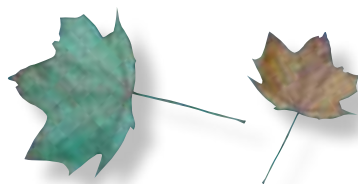
ALPHA NU CONTINUED . . .

of professionalism, goal setting, and dedication in our visit to the Boys and Girls Club.

Last spring, our chapter inducted 8 eager, new members. The members of Alpha Nu, old and new, are excited to

begin this school year with refreshing ideas and are enthusiastic to get to work and plan events that will be beneficial to pharmacy students and will have a lasting impact on our community. This year, we will work to increase participation during breast cancer

month not only from the College of Pharmacy, but also from the University; we plan to host community health fairs, provide seminars on professionalism, career building, and residency and fellowship opportunities, and increase our fundraising efforts.



CHAPTER UPDATES -ALPHA PHI



Alpha Phi: Duquesne University

Hello from Pittsburgh, Pennsylvania! The Alpha Phi chapter at Duquesne University is proud to say that we are thriving with new members and endless opportunities for our future pharmacists. During the spring, we welcomed 15 new sisters and we are very eager to have another larger collection of new sisters who will be joining us this fall during our "Under the Sea" themed rush.

This summer, we had 9 sisters attend National Convention in Orlando, Florida where we had the opportunity to meet and network with girls and alumni from across the country. We were exceedingly

proud to receive an honorable mention for Most Outstanding Chapter, as well as an award for Continued Excellence. At this convention, we learned about topics such as Ovarian Cancer and promoting its awareness, the anti-vaccination movement, as well as shared ideas with other chapters such as our newly instated chair position of "Risk Management." We really hope to incorporate other chapters' ideas into our own as well.

This October, we will be holding our 11th Annual Breast Cancer Awareness Luncheon in addition to various other fundraising events. Last year, we raised over \$2,000 for several breast cancer organizations. We will also hold our

biannual "Tea with KE," where professors are invited to share in tea and snacks with the sisters as an opportunity to form connections with faculty. Our other fall events will include an "Ugly Sweater" Christmas party, participating in the JDRF Walk for the Cure, group fitness classes, and countless other opportunities for our sisters.

We are looking forward to another exciting semester with the sisters of the Alpha Phi chapter, and most importantly to continue to promote our leadership and community involvement as women in pharmacy!

CHAPTER UPDATES - ALPHA PSI

Alpha Psi: Palm Beach Atlantic University

The Alpha Psi Chapter is located at Palm Beach Atlantic University's Lloyd L Gregory School of pharmacy in West Palm Beach, Florida. Our chapter has seen tremendous growth over the last

conducted rush events in both the Fall and Spring, which has greatly increased our membership. Rushing in the Spring allowed students a semester to get acquainted with our fraternity, current brothers, and our values, while also getting familiar with the school and their responsibilities as new pharmacy students. We strived to instill in them the sense that we are a family that is not only for four years, but also for life.

We have the honor to call brothers influential members in our community and leaders in pharmacy. Most of our brothers hold positions in multiple organizations such as ASHP and APhA, have had articles published, participate in mission trips abroad, received patient care awards while on rotations, and have been recognized by our school for their high scholastic achievements.

We have also made an impact in the community by participating in events such as the health fair and sponsoring booths for men's, women's, and children's health. Our chapter had the honor of hosting a Lunch-and-Learn

with one of the biggest turn-outs in our school's history for PACE Center for Girls. The entire School of Pharmacy participated in a competition to see who could donate the most items for the PACE facility in our neighborhood. This local service project was a great way of making a huge difference for girls who are in need of common items.

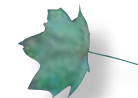
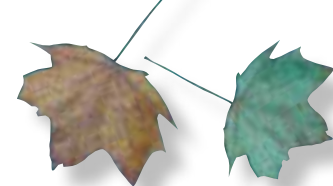
Fundraising has never been more fun than with our brothers. The annual Mr. Pharmacy event last year was a huge success, still maintaining its legacy as the largest event for our school of pharmacy.

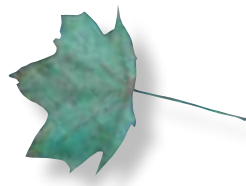
This year, our chapter was able to send two representatives to the National Convention in Orlando, Florida. We strive to send many more to the next convention as well as encouraging alumni to stay involved.

Our chapter has gone through the journey of being on the verge of extinction in 2014. However, rock bottom became a solid foundation on which to build up our fraternity of tightly knit brothers who compose a very colorful family.



two years. We grew from just six P3 members about to go on rotations to an astounding 33 active members currently. Although we have quadrupled in size in a short amount of time, there is still a unique bond and unity that exist among all of our brothers. We have





CHAPTER UPDATES - BETA EPSILON

Beta Epsilon: Medical University of South Carolina

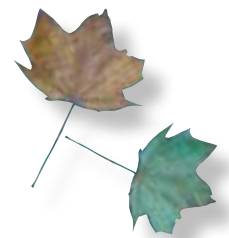
Greetings from the Low Country! The ladies of the Beta Epsilon chapter of Kappa Epsilon proudly attend the Medical University of South Carolina located in Charleston, SC. As future pharmacists, our all-female chapter is dedicated to furthering the profession of pharmacy while giving back to our community. We remain actively engaged in the Charleston community

by cooking dinner for families at the Ronald McDonald House each month, helping build houses with Habitat for Humanity, and taking advantage of any other opportunity that comes our way.

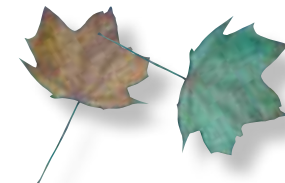
This fall, we will collect socks for cancer patients undergoing infusions at the Hollings Cancer Center located right beside the College of Pharmacy. As their official "sock partner," we strive to positively impact both the patients and those who work with them.

We also have a fun time putting the socks together in a presentable way.

We are anticipating a great year and are hoping to build a strong database of alumni members. We plan on continuing to grow and empower ourselves by promoting the Kappa Epsilon ideals throughout our pharmacy education and pharmacy careers.



CHAPTER UPDATES - BETA THETA



Beta Theta: University of the Incarnate Word

The Beta Theta Chapter at the University of the Incarnate Word experienced a very successful 2014–2015 academic year. This past spring, we inducted 18 new members and we're excited about adding more members to our growing chapter.

Last fall, potential new members got to know chapter members better through various activities including a bowling night and a Halloween party, where we had pumpkin carving, a costume contest, and karaoke. We also emphasized and shared with them the importance of community service in the Kappa Epsilon tradition. Our chapter promoted KE's National Project of Breast Cancer Awareness by hosting Breast Cancer Awareness Week at the

Feik School of Pharmacy. We passed out pink ribbons to students and faculty, baked pink treats for donations, and created a pink picture frame for students and faculty to take Breast Cancer Awareness selfies. All funds that were raised were donated to the Susan G. Komen organization. We

also helped out in our community by collecting children's books and donating them to SAReads, which is a non-profit organization that is dedicated to promoting literacy in San Antonio.

During the spring semester, the chapter remained active in our community by assisting the efforts of Expanding Your Horizons, which emphasizes the subjects of science, math, engineering, and technology to young girls. We also participated in SAMministries Overcoming Homelessness program by collecting and donating household goods to help families take the first step in

their journey to self-sufficiency. For fundraising, we continued our tradition of selling Valentine's Day treats, and sold cupcake bouquets, cake pops, and chocolate covered pretzels. In April, we held our annual spring formal where we had a catered dinner to honor our brothers and celebrate everything we accomplished throughout the year. We ended the evening with games, dancing, and a fun photo booth. We also participated in the Susan G. Komen Race for the Cure by forming a team to walk at the event as well as a team to cheer and encourage the runners and participants.

The Beta Theta Chapter celebrated a very successful year and looks forward to an even better year ahead!



CHAPTER UPDATES - BETA MU



Beta Mu: University of North Carolina-Asheville

Hello Kappa Epsilon Family! The Beta Mu chapter at the Asheville campus for the UNC Eshelman School of Pharmacy has had a busy year! Firstly, we would like to congratulate our founding class on their graduation! It is thanks to the hard working and dedicated class of 2015 that we have our great chapter. Pictured are our graduates getting ready to cheer on the runner's at Biltmore Park's annual Pink in the Park Fun Run.

An exciting new event for our chapter was our first annual "Scouting Out Girl Scouts" badge event in April. Beta Mu hosted this free event for over 30 Girl Scouts ages 5 to 17 from 6 different area troops. The event was sponsored by Beta Mu and the UNC ESOP Student Senate. The girls learned how to compound Chapstick, to distinguish candy from medicine, and about careers in pharmacy. It was an exciting time for our chapter and the Girl Scouts, and we showed them the importance of women working in the field of science and in Pharmacy. In the Spring of 2016, we hope to expand this event to 100 Girl Scouts from across the region and add an optional First Aide training badge.

Two of our Executive Committee members were excited to join the National Convention in Orlando this summer bringing home great new ideas for recruitment, growth, and fundraising for our chapter!

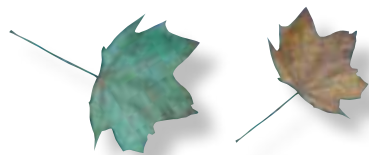
This year, we are continuing our highest grossing event of car wash ticket sales and in addition two new large efforts this Fall. We will be adding a coffee mug sale and a 50:50 raffle. For this Fall's recruitment, the executive committee has chosen the



theme "Let's go to the Movies" and events include a Murder Mystery Oscar party, Super Hero Bowling, and a movie night hosted on campus.

This Fall, Beta Mu is starting a brand new Peer Mentoring and Pre-Pharmacy affiliates program. Partnering with the UNC Asheville Pre-Pharmacy Club, Peer Mentoring will involve pairing UNC Asheville Pre-Pharmacy students with a Beta Mu pharmacy student for bimonthly events. Once a month during the semester, we will host programmed events such as Community Outreach, Interview Tips, and Pharmacy School Scoop. In addition, pre-pharmacy students will meet one-on-one with pharmacy students to talk about goals for pre-requisites, applications, and opportunities to gain experience in pharmacy. Following our bylaw updates

continued on next page



over the summer, Pre-Pharmacy students can now join our chapter as affiliates and attend meetings as well as other chapter activities. It is the mission of the Asheville campus to promote pharmacy in Western North Carolina, and we are so excited to have the opportunity to work with undergraduates and help mentor them in pharmacy.

On August 20th, the Beta Mu chapter of Kappa Epsilon, The UNCEshelman School of Pharmacy, and the LAM Foundation

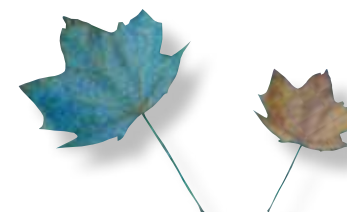
launched the Balloon Challenge. We are seeking to raise awareness for the LAM (Lymphangioleiomyomatosis) Foundation. Our sisters in the Beta Mu and Lambda chapters have made their own videos and have distributed them on social media sites. Not even a week into the launch our own Lammie received the following message on Facebook from a stranger: *"Hey, there. I am a fellow Lammie and live in Nashville. A close friend of mine texted me today asking me if I had heard about the balloon challenge because*

she had been tagged. So, whatever you are doing is catching on! Good job."

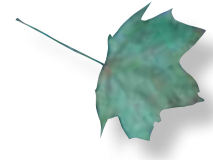
Thank you to all the chapters across the country who are making their own videos and helping us reach those women who are struggling to breathe. It took 4 months for the ALS Ice Bucket Challenge to really gain momentum, so PLEASE keep posting your videos. Every post counts!!! We are all family. Let the power of friendship be our goal, our mission and our Bond.



BETA MU CONTINUED . . .



CHAPTER UPDATES - BETA RHO



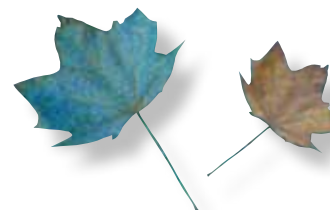
Beta Rho: **Midwestern University**

Hello from the Beta Rho chapter at Midwestern University in Glendale, AZ! We are a new chapter and so excited to be apart of the Kappa Epsilon family. This past year was a busy and exciting one as we established ourselves on campus. Ten new members joined our fraternity last year, and we are looking forward to adding more this fall. Last October, we hosted a Breast Cancer Panel Luncheon for students to learn about the importance of early screening and the role pharmacists play in patient care. In February, we hosted our first "Go Red for Women" event to raise awareness about heart disease in women.

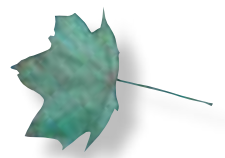
Students who wore an article of red clothing received a raffle ticket that made them eligible to win a heart-healthy bag full of goodies including a FitBit. Our last event of the school year was a hygiene product drive for a local women's shelter that was in dire need of donations. We had an overwhelming number of donations

and can't wait to hold another drive this year!

We are kicking off this school year with our first "Wear Teal Day" on campus to raise awareness about Ovarian Cancer. We will be setting up a booth with informational brochures, handing out teal ribbons for students to wear, and accepting donations for the National Ovarian Cancer Coalition (NOCC). We have been quite busy this summer as recruitment has been in full effect. As a new school year starts, we are excited to continue to promote women's health and our efforts to help our community. We are extremely proud of all we have done and excited for what's to come.



CONVENTION HIGHLIGHTS



The 50th Kappa Epsilon Convention in Orlando, Florida certainly lived up to Walt Disney's motto of "Dream, Believe, Dare, Do." Members from across the country convened at the beautiful Buena Vista Palace and shared their own KE stories and hopes for KE's future.

The first night of convention showcased the best of every chapter. Unique chapter t-shirts were worn and sold quickly in the marketplace. The opening night included a service project for patients at Orlando Health, where each table created a decorated hat with toiletries, and were judge upon their creativity. The evening ended with a dessert social and some very special Mickey cake pops provided by our Convention Chair, Renee Ference. The Alumni Interest Committee hosted a lovely Alumni Social at 20Seven atop the Buena Vista Palace.

the position of Vice President of Membership Recruitment were taken from the floor. Two very important announcements were made: The 2017 Convention will be held in New Orleans, LA and the 2021 Centennial Convention will be in the Washington, DC area.

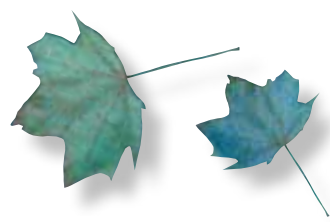
Several workshops were provided for both collegiate and alumni members. We learned about professionalism, and "How to Best Represent Yourself" with Lee Hecht Harrison and how to "Motivate the Middle" with T.J. Sullivan. Our gracious speakers were not without laughs. They presented very relevant and applicable lessons. Our collegiate members enjoyed a Recruitment Workshop, while our alumni and advisors interacted during an Alumni/Advisor workshop. After some free time to roam Orlando, the Fraternity reserved a special space at Disney's Epcot for a fireworks and dessert social with many Disney-themed treats.

The hard work started the next morning with a CE breakfast. Marianne Billeter, Pi Alumna and Past Foundation President, presented "Vaccines: Friends or Foes", a very culturally-driven topic in health care. During the first Business Session, Grand Council, Foundation, and Committees presented their reports. The slate of officers for the proceeding biennium was presented with the Nomination Committee's report and nominations for

On our second morning of convention, Salvatore Bottiglieri, Alpha Upsilon alumnus and current President-elect, presented "Updates in the Management of Ovarian Cancer", laying the groundwork for our adoption of Ovarian Cancer Awareness as part of our national project. The second business session introduced the report of the Bylaws Committee, presenting proposed bylaw changes.



continued on next page



CONVENTION HIGHLIGHTS *CONTINUED . . .*



The Kappa Epsilon Foundation Luncheon was kicked off with a motivating session with Roz Usheroff, where she encouraged us to be a “Babe In Total Control of Herself.” The Luncheon highlighted chapters and individuals who continue to contribute to Kappa Epsilon in support of scholarships and career achievement awards.

Part 2 of the second business session brought about the election of Grand Council officers for the 2015-2017 Biennium. Grand Chapter has voted the following officers to lead Kappa Epsilon for the next biennium:

Sal Bottiglieri, Alpha Upsilon (President Elect)
Lauren Clouse, Lambda (VP of Alumni Development)
Morgan Fleming, Beta Kappa (VP of Collegiate Development)
Christine Kane, Pi (VP of Membership Recruitment)
Chelsea Burns, Alpha Chi (VP of Financial Development)
Kathy Nguyen, Tau (VP of Communications)
Kara Willis, Omega (Grand Secretary)

Friday evening gave all attendees what they have been waiting for: free time to go explore Disney World! Meanwhile, the newly-elected Grand Council members for the 2015-2017 Biennium got to know each other and worked on plans for the coming two years.

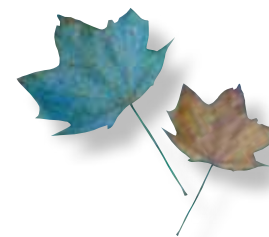
The last day of convention kicked off with Dr. Lindsey Childs-Kean, Alpha Omega Advisor, presented the updates in Hepatitis C. The morning’s continuing education was followed by a highlight for many collegiates, the Residency and Fellowship Workshop, facilitated by Lisa Braccini-



Barletta (Omicron, Past Grand President), Marianne Billeter (Pi, Foundation President), and Sara Snow (current Grand President). The National Committees then met to discuss plans and goals for the next biennium. During the third Business Session, we wrapped up all open business, presented our resolutions, and closed Convention with the Rededication Ceremony.

The Convention Banquet is held to formally close and recognize the accomplishments of the preceding biennium. In a moving tribute, the Grand Chapter awarded Past President Denise Schultz (Zeta) with the Key of Excellence Award. In honoring the achievements of the 2013-2015 Biennium, awards were presented to chapters. Lastly, the new Grand Council Officers were sworn in and Grand President Sara Snow addressed the Fraternity with her vision for 2015-2017. Hugs were spread all around and tears of joy were shed as new friends became old friends, and we truly understood what it meant to be KE For Life.

NOMINATE YOUR COLLEAGUES FOR THESE PRESTIGIOUS AWARDS



KE/MERCK VANGUARD LEADERSHIP AWARD

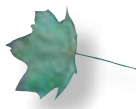
Awarded to an exemplary alumnus who has contributed both professionally and within their community.

Nominations due October 15th annually

CAREER ACHIEVEMENT AWARD

Active alumnus member noted for their professional accomplishments.

Nominations due October 15th annually



LINDA RODGERS MEMORIAL AWARD

Honors a KE member who exemplifies Linda's characteristics of leadership, dedication, diplomacy, friendship, and inspiration to others. \$200 award.

Nominations due May 15th in odd years (Alumni)

Nominations due May 15th in even years (Collegiate)

ZADA COOPER SCHOLARSHIPS

Recognizes superior achievement and is presented annually to active collegiate members. \$750 scholarship awarded.

Applications due November 15th annually

KE/AFPE NELLIE WAKEMAN FELLOWSHIP

Monetary award used to encourage members to pursue an advanced degree in a college of pharmacy graduate program. \$7500 award.

Applications due February 1st annually

FOUNDATION GRANTS

Provides members and chapters with incentive money for innovative educational projects in the profession of pharmacy.

May apply anytime!

GIVE TO KE TODAY

In a continuing effort to provide financial stability and perpetual support for Kappa Epsilon Fraternity and the Kappa Epsilon Foundation, please consider making a donation to one or both of these entities. Let us speak with one voice, in strategy and purpose, and share our resources to promote the future of Kappa Epsilon.

My gift to the Fraternity is \$ _____ My gift to the Foundation is \$ _____
Gifts to the Foundation are tax-deductible.

Please make checks payable to Kappa Epsilon Fraternity and/or Kappa Epsilon Foundation. or pay by credit card:

Mastercard/Visa #: _____ Exp: _____

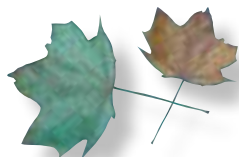
Name: _____

Street, City, State, Zip: _____

Send form to: Kappa Epsilon, 7700 Shawnee Mission Pkwy, #201
Overland Park, KS 66202

You may also pay via Pay Pal at www.kappaepsilon.org

**Does your chapter need ideas on how to support the KE National Project of Breast and Ovarian Cancer Awareness?
Did your chapter not have enough time to plan for Ovarian Cancer Awareness Month activities this September?
Not to worry! KE Chapters have already begun to partner with an organization focuses on both aspects of the
National Project YEAR ROUND!**



Bright Pink is on a mission to save women's lives from Breast and Ovarian Cancer by empowering them to live proactively at a young age. Bright Pink's innovative programs equip, educate, and empower young women to be proactive by reducing their risk for Breast and Ovarian Cancer, or detecting these diseases at early, non life-threatening stages. Founded by Lindsay Avner in 2007, Bright Pink strives to reach the 52 million women in the United States between the ages of 18-45 with this life-saving education.

About the Brighten Up® Educational Workshop

The Brighten Up Educational Workshop is a signature program that educates and empowers young women to be proactive advocates for their health. Facilitated by a certified Bright Pink Ambassador, these 20-minute sessions ground participants in the basics of breast and ovarian health, introduce them to early detection techniques, and equip them with life-saving knowledge. Immediately following the workshop, participants receive access to tools that can help them assess their personal level of cancer risk, and develop an action plan in partnership with a doctor they trust. After the workshop, Bright Pink will send a follow-up email with a unique hyperlink to our Assess Your Risk tool, a digital quiz to help participants understand their personal risk level for breast and ovarian cancer based on their lifestyle factors and family health history. The unique hyperlink allows them to measure the workshop attendee's visits to the tool and we can share this measurement with you to demonstrate the session's impact.

Bright Pink has delivered Brighten Up Educational Workshops to prestigious partners nationwide, including Walgreens, Women's Health Magazine, American Eagle Outfitters, Mesirow Financial and Universities across the country.

Logistics

- Bright Pink offers this workshop free of charge. We see this engagement as an opportunity to invest in the wellbeing of your members/employees.
- Bright Pink asks that you provide an audience of 50+.
- The format of the workshop is a 20-minute projected presentation to be followed by Q&A.

Set Up

- Bright Pink will need projection capabilities (a laptop hook up and screen).
- Bright Pink will collect email addresses of participants to send immediate follow-up communication with additional health resources and tools to take action.

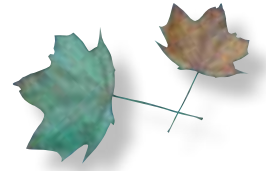


Email BrightenUp@BrightPink.org to schedule your chapter's Brighten Up Educational Workshop today!

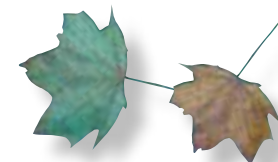
100-Year Challenge

“Whereas everyone enjoys a birthday party, whereas KE will soon be celebrating its 100th birthday, whereas parties can be expensive, therefore be it resolved that each and every KE member donate \$500 by June 30, 2020, to the Kappa Epsilon Foundation and that Foundation designate a custom made piece of fraternity jewelry that will be ONLY given to those members donating the \$500 minimum.”

— Resolved at the 49th Kappa Epsilon National Convention
Richmond, Virginia 2013



GET TO KNOW GRAND COUNCIL



Grand President Sara Snow was initiated as a member of the Alpha Chi Chapter at Bernard J. Dunn School of Pharmacy, Shenandoah University, Winchester, VA in 2007. She received her Doctor of Pharmacy degree in 2010 and Masters in Business Administration in 2009 from Shenandoah University. She also received her Bachelors of Science in Biology from the University of North Carolina at Chapel Hill in Chapel Hill, North Carolina in 2006. Sara currently resides in San Francisco, California, and works in Regulatory Affairs at Gilead Sciences, Inc.

Her leadership roles in the Alpha Chi KE Chapter at Shenandoah University included Social Chair, SGA Representative, and Vice President. Nationally, she has served as a member of the KE National Project Committee and on Kappa Epsilon Grand Council as Vice President of Collegiate Development (2011-2013), President Elect (2013-2015), and currently as the Grand President (2015-2017).

In her free time, Sara enjoys traveling, exploring the Bay Area, and spending time with family and friends.



President-Elect Salvatore Bottiglieri, originally from Montrose, New York, received his Doctor of Pharmacy degree from Albany College of Pharmacy in 2008. Sal was initiated into the Alpha Upsilon Chapter at Albany College of Pharmacy in 2004. Sal Bottiglieri completed his pharmacy practice residency in North Carolina at The Moses

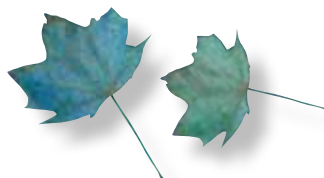
Cone Health System in Greensboro. Additionally he completed his specialty residency in Hematology/Oncology with The University of Kentucky in Lexington, under the direction of Dr. Val Adams.

Sal Bottiglieri currently serves as a Clinical Oncology Pharmacist at Moffitt Cancer Center in Tampa, Florida. Dr. Bottiglieri provides clinical pharmacy services to the gastrointestinal, head & neck, endocrine, and women's cancer programs and clinics. In addition to his clinical responsibilities, he provides lectures and clinical rotations for several colleges of pharmacy in Florida. His professional memberships in addition to Kappa Epsilon include Hematology/Oncology Pharmacy Association (HOPA), Phi Lambda Sigma, and Rho Chi. Sal is active in his professional discipline of oncology pharmacy and serves on the Board Certified Oncology Pharmacist Updates/Recertification committee for HOPA.

His Kappa Epsilon involvement has included Grand President-Elect (2015-2017), Grand Council Secretary (2009-2011), Chair National Projects Committee (2007-2009), Alpha Upsilon Chapter Past-President (2006-2007), Alpha Upsilon Chapter National Convention Delegate (2005 & 2007), Alpha Upsilon Chapter President (2005-2006), Alpha Upsilon Chapter Vice President (2004-2005). He was also among the five 2007 Zada M. Cooper Scholarship recipients.

For fun, Sal enjoys long distance running and foot race competitions, exploring the many restaurants and activities of Tampa Bay and Orlando regions, traveling, and various outdoor activities. He lives in Tampa Bay Florida with his wife Sue Bottiglieri and his 5-year old Dalmatian Kona.

continued on next page



GRAND COUNCIL CONTINUED . . .



Vice President Alumni Development Lauren Clouse is from Charlotte, North Carolina. She completed two years of pre-pharmacy coursework at the University of North Carolina at Chapel Hill before receiving her Doctor of Pharmacy degree from the UNC Eshelman School of Pharmacy at Chapel Hill in 2015.

Lauren has recently moved to Princeton, New Jersey, to begin her career at Bristol-Myers Squibb as a Medical Information/ Medical Science Liaison

Fellow in the Rutgers Pharmaceutical Industry Program.

Lauren was initiated into the Lambda chapter of Kappa Epsilon in 2011. Her leadership positions within the Lambda Chapter included Vice President (2013-2014) and New Member Educator (2012-2013). Nationally, she has served as a Co-Chair of the National Projects Committee (2013-2015), and is currently serving as Vice President of Alumni Development (2015-2017).

In her free time, Lauren enjoys traveling, UNC basketball, hiking, and spending time with family and friends.



Vice President of Collegiate Development Morgan Flemming is originally from the Piedmont Triad Area of North Carolina. She moved to South Carolina in 2004 to attend Clemson University and has been living there since. She a Clemson Alumni. Go Tigers! Morgan graduated from Clemson in 2008, Cum Laude, with a Bachelor's of Science in Business concentrated in Management. Her part-time undergraduate job as a pharmacy

technician is what sparked her interest in the pharmacy profession and motivated her to return to school to pursue this career. Since graduating from Clemson, she has earned an Associate's of Science and an Associates of Occupational Technology, with a concentration in Pre-Pharmacy, and is currently in her 4th year at Presbyterian College School of Pharmacy. At Presbyterian she is an active member and committee chair for APhA-ASP, and a member of The Pharmacy Student Governance Association and The Center for Entrepreneurial Development.

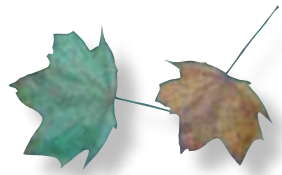
Morgan was a founding member of the Beta Kappa Colony of Kappa Epsilon at Presbyterian College in 2011. She has served as the New Member Educator, President Elect, and founding President of the Beta Kappa Chapter. Morgan was the recipient of the Zada M. Cooper Scholarship in 2012-2013. Morgan was elected to serve on Grand Council as the Vice President of Membership Recruitment at the 2013 National Convention

Morgan is an avid runner, and enjoys Clemson football, traveling, spending time with her family and friends.



VP Membership Recruitment Christine Kane is from Indianapolis, Indiana. Currently, she is in her fourth year of pharmacy school at Purdue University in West Lafayette, Indiana.

continued on next page



GRAND COUNCIL CONTINUED . . .

Christine joined Pi chapter at Purdue University as a pre-pharmacy student in 2010 and was initiated in 2012. She has served as historian, vice president and president. This is her first biennium on Grand Council and she is excited for the opportunity!

Christine enjoys running, biking, photography, country music, and anything leopard print. While her schedule is busy, she manages to find some extra time to volunteer with the American Cancer Society and participate in Relay For Life in the Central Indiana area!

Vice President of Financial Development Chelsea Burns was initiated as a member of the Alpha Chi Chapter at Bernard J. Dunn School of Pharmacy, Shenandoah University, Winchester, VA in 2008. She received her Doctor of Pharmacy degree in 2011. She also attended Virginia Commonwealth University in Richmond, VA for her undergraduate studies. Chelsea currently resides in Danville, Virginia, and works for CVS Health.

Her leadership roles in the Alpha Chi KE Chapter at Shenandoah University included Pledge Class President, President-Elect, and Chapter President. Nationally, she served as an Alumni-at-Large Delegate and on Kappa Epsilon Grand Council as Vice President of Communications (2011-2013), Vice President of Alumni Development (2013-2015), and currently as the Vice President of Financial Development (2015-2017).

In her free time, Chelsea enjoys traveling, gardening, and spending time with family and friends.



Vice President of Communications

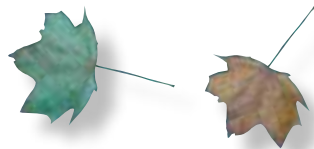
Kathy Nguyen grew up in Falls Church, Virginia, a suburb of Washington, DC. She attended Virginia Tech, where she received a BS in Biology with a minor in Chemistry and Economics in 2009. Kathy graduated from the Medical College of Virginia and received her Doctor of Pharmacy degree

in 2013. After graduation, Kathy worked as a community pharmacist with CVS Pharmacy in Arlington, Virginia. With a series of fortunate events, she now works in Medication Therapy Management with the Mirixa Corporation in Reston, Virginia, as well as a Medical Information Pharmacist with WRB Communications in Chantilly, Virginia.

Kathy's first involvement with Kappa Epsilon was during her P1 year. She was a delegate for the Tau Chapter at the 2011 Convention in Phoenix, Arizona. Kathy was elected as Vice President of Communications for the Grand Council at the 2013 Convention in Richmond, Virginia and at the 2015 Convention in Orlando, Florida.



continued on next page



When not playing pharmacist, Kathy works on several social media platforms and websites, reaching out to many student pharmacists daily. She loves the Virginia Tech Hokies, Seattle Seahawks, and Washington Nationals.

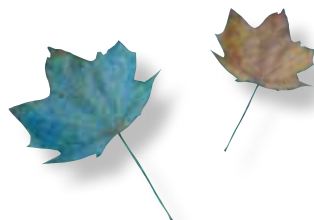


Grand Secretary Kara (Miller) Willis is originally from Springfield, Missouri, but grew up in Kansas City, Missouri. She received her Doctor of Pharmacy degree from University of Missouri-Kansas City in 2012. After completing pharmacy school she started working at Walmart Pharmacy as a staff pharmacist in Hutchinson, Kansas. She became the Assistant Pharmacy Manager in February of 2015, and is where she continues to work presently.

Kara was initiated into the Omega Chapter at University of Missouri-Kansas City in 2007. She served as Alumni Liaison, Secretary, President and Chaplin.

Kara was elected to Grand Council as Secretary at KE's National Convention in Orlando, Florida, in 2015, and is presently holding that office.

Kara enjoys scrapbooking, baking challenging sweets, spending time with her family and holding game night with her friends. She loves football, especially having Superbowl parties.



GRAND COUNCIL CONTINUED . . .



Past President Alissa Lockwood is originally from Denver, Colorado, but spent most of her youth in Knoxville, Tennessee. She received her bachelor's degree in Biomedical Engineering at the University of Tennessee (GO VOLS!!) and her Doctor of Pharmacy degree from Mercer University Southern School of Pharmacy in 2007. Following

pharmacy school, she completed a PGY1 pharmacy practice residency and a PGY2 critical care specialty residency at Grady Health System in Atlanta, Georgia. Alissa is currently the Critical Care Clinical Pharmacy Specialist at Parkland Health and Hospital System in Dallas, Texas.

Alissa was initiated into the Alpha Delta chapter at Mercer University in 2004. She has served as pledge publicist, chapter social chair, and 1st vice president. Alissa was elected to serve on Grand Council as the Vice President of Membership Recruitment in 2005. She held the position of Vice President of Collegiate Development from 2007 until 2011, President-Elect at the 2011 to 2013, and Grand President from 2013-2015.

Alissa enjoys sports, snowboarding, traveling, live music, socializing with friends, and spending time with family. She loves SEC football but will only cheer for the University of Tennessee Volunteers!

Keep Up With KE

WWW.KAPPAEPSILON.ORG

ON FACEBOOK: KAPPA EPSILON FRATERNITY, INC



ON TWITTER @ KEGRANDCOUNCIL



ON INSTAGRAM @ KEGRANDCOUNCIL



ON LINKEDIN: KAPPA EPSILON PROFESSIONAL

PHARMACY FRATERNITY 

