

THE BOND

**SPRING 2022
EDITION**

A PUBLICATION OF
**KAPPA EPSILON
FRATERNITY, INC.**

KAPPA EPSILON
C/O AFFINITY STRATEGIES
403 W ST CHARLES RD, SUITE 403B
LOMBARD, IL 60148
www.kappaepsilon.org



Kappa Epsilon National Office



Cayla Marconi, Executive Director

**Kappa Epsilon Fraternity, Inc.
c/o Affinity Strategies
403 W ST. CHARLES RD, SUITE 403B
LOMBARD, IL 60148**

Email: KE@affinity-strategies.com

Web: www.kappaepsilon.org

Office Hours:

Monday – Friday
8:30 a.m. – 5:00 p.m. CST
(331) 248-1699



Mission Statement

The mission of Kappa Epsilon will be to unite pharmacy students, faculty, and alumni dedicated to empower its members to achieve personal and professional competence, to develop leaders within the profession and community, and to provide professional and philanthropic services.

The Bond is an official publication of Kappa Epsilon Fraternity, Inc. The magazine is published two times annually. Articles and pictures should be sent to the KE Executive Office, c/o Affinity Strategies, 403 W St. Charles Rd, Lombard IL, 60148, or to KE@affinity-strategies.com.

Contents

02 National Office Information

03 Mission Statement

05 Grand Council Connections

06 President's Corner

Collegiate Chapter Updates

07 Kappa

09 Sigma

10 Omega

11 Alpha Epsilon

13 Alpha Nu

15 Alpha Chi

17 Beta Beta

18 Beta Epsilon

20 Beta Kappa

Updates from the Officers of the National Grand Council

21 Updates from the President Elect

23 Updates from the Vice President
of Membership Recruitment

Alumni Chapter Updates

24 How to be Engaged as an Alumni

25 History Tidbits

Award Scholarship Recipients

26 Nellie Wakeman Fellowship Recipient

27 Zada Cooper Scholarship Recipients

28 KE Merck Vanguard Leadership Award

29 Fall 2022 The BOND Chapters

30 Awards and Scholarships

31 Connect with KE & KE Store



Grand Council Connections

PRESIDENT

Christine Bryant

KEPresident@gmail.com

Lambda, Rho, Alpha Chi,
Beta Iota, Beta Mu, Alpha

PRESIDENT ELECT

Nikkina Hankins

KEPresidentelect@gmail.com

Xi, Omega, Alpha Gamma,
Alpha Delta

VP ALUMNI DEVELOPMENT

Kristina Rosus

KEVPAumni@gmail.com

Delta, Sigma, Psi, Alpha Nu,
Beta Rho

VP COLLEGIATE DEVELOPMENT

Betsy Stephens

KEVPCollegiate@gmail.com

Beta, Pi, Chi, Beta Beta

VP MEMBERSHIP RECRUITMENT

Alexis Youngpeter

KEVPRecruitment@gmail.com

Alpha Xi, Alpha Rho,
Alpha Phi, Beta Zeta

VP FINANCIAL DEVELOPMENT

Denise Schultz

KEVPFinance@gmail.com

Alpha Beta, Alpha Lambda,
Beta Omicron, Beta Pi

VP COMMUNICATIONS

Tatyana Franklin

KEVPCommunication@gmail.com

Kappa, Tau, Alpha Theta,
Beta Alpha

GRAND SECRETARY

Ashley Sotoodeh

KESecretary@gmail.com

Mu, Upsilon, Alpha Epsilon,
Beta Epsilon, Beta Lambda

IMMEDIATE PAST GRAND PRESIDENT

Erin Lingenfelter

KEPastpresident@gmail.com

Delta, Sigma, Psi, Alpha Nu,
Beta Rho

President's Corner



Sisters and Brothers,

These past few years have been a whirlwind! In an attempt to re-establish my zen, I have been doing some reflection and learned that gratitude can shine a positive light on any situation. Through this reflection, I have realized I have never been more grateful to be part of Kappa Epsilon and here are my top 3 reasons why:

1. Kappa Epsilon members shine in everything they are a part of!

During November 2021, I had the opportunity to complete a couple chapter visitations (in-person and virtual). Visitations are one of my favorite parts of being on Grand Council. I had the opportunity to sit down with a dean at one of the colleges and before I could even ask her a question, she was bragging about her local KE members and all that they do for the College of Pharmacy & their local community. That spoke volumes to me! We are building the next generation of pharmacy leaders in each of our chapters!

2. When life gets tough, a KE is ALWAYS available to lend a listening ear!

Serving as a front-line worker in the medical field is very demanding right now, making burnout more and more prevalent. This past month, with bad news after bad news, I started to feel very burnt out. After a quick text to some of my best KE friends, they quickly offered a listening ear for multiple vent sessions! Their busy schedules were suddenly open and free when I needed it the most. And that's only one example of the KE Bond. I could give you so many more!

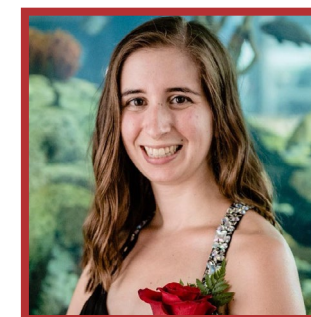
3. KE members are creative and innovative!

This biennium, during the 2021 Convention, I put forth a few challenges to our members. To focus on recruitment, to define value in our alumni membership, and to start educating ourselves about diversity, equity, and inclusion. These three avenues have led to so many great questions and inquiries during the fall & spring semester where I know each chapter and alumni member is really focusing on how they can get involved and help! I can't wait to see all that we accomplish. We aren't accepting what has always been done and instead are writing our own NEW history!

I am grateful for each and every one of you! And don't forget to let those around you, especially your KE family, know how grateful you are for them!

In the Bond,

Christine Bryant
Grand President, Kappa Epsilon



Chapter Updates

KAPPA

University of Florida-Gainesville | Gainesville, FL

This past Fall, the Kappa Chapter successfully initiated 24 new members into Kappa Epsilon Fraternity! The 24 members engaged with us during the fall rush season at "Camp KE". Some of the events included a Campground Scavenger hunt, Coffee and Crafts, and Tie-Dye and S'mores! It was a pleasure getting to know each one of our new members at these events before our New Member Educator led them through the New Member Education Period. Our new members passed with flying colors, and we are so honored to welcome them into our chapter!

Kappa Chapter hosted its annual Pinktoberfest 5K with half of the proceeds going to Blossoming Butterfly and the remaining half going to Bright Pink. Blossoming Butterfly is a local charity that helps breast cancer patients pay bills, housing, and

transportation while providing them with an unmatched support system. Kappa chapter had over 100 people register to run the race and received an overwhelming amount of support from the University of Florida and the Gainesville community. Our inaugural race was 5 years ago, and we have grown exponentially ever since! This 5K has become a staple in the community and we are excited to see the tradition stand firm in the years to come!



Kappa Chapter New Member Educator (Cody Lasso) with our new initiates.

Our annual Residency Forum was hosted in-person this year and showcased 13 residency programs! This event is held annually each fall semester in collaboration with our local SSHP chapter, and it was a huge success. Programs from all over the state of Florida attended the event. This program included separate sections for first- and second-year students to understand the residency process, as well as a section for third- and fourth-year students to hear tips and tricks from residency program directors, professors, and even current residents. The expertise and knowledge gained from this experience was priceless!



Kappa Chapter representing at our Pinktoberfest 5k.

continued on the next page...

Continued...

KAPPA

University of Florida-Gainesville | Gainesville, FL

We are excited to transition into the spring semester as we anticipate our 15th annual Bowling for a Cure fundraiser. Proceeds from this event go to Bright Pink and the National Ovarian Cancer Coalition. Bowling for a Cure is organized by our National Projects chair each year and has been a popular springtime event! This much anticipated event is a great way for pharmacy students to take a break from the stress of classes and enjoy some friendly competition while raising money for a great cause. We are looking forward to the continued growth of our chapter and are excited for what is to come!



Yeniffer Nunez and Julie Al-Bahou welcoming their littles (Dayanna Herrera and Mikaela Foster) into the family!



Kappa Chapter volunteering at a local botanical garden to help keep the grounds beautiful. (Left to Right- Angela Bundy, Julie Al-Bahou, Shirly Ly)



Angela Bundy (Left) and Nicole Sandoval (Right) educating the Gainesville community at the University of Florida College of Pharmacy Greater Gator Health Fest.



Kappa Chapter embracing spooky season through pumpkin painting! (Left to Right- Chris Case, Natasha Wells, Lia Manias, Kat Lambertson, Kayla Carr, Toni Williams, Anai Williams, Shane Artiles)

Chapter Updates

SIGMA

University of Arizona | Tucson, AZ

Sigma Chapter at the University of Arizona is proud to share our accomplishments, social, and fundraising events that were hosted over the past year. We are excited to announce the academic achievements of members Carson McKelvey and Megan Lopez, and congratulate them on their induction into Rho Chi Honor Society. We applaud these accomplishments and their leadership as Professional Development Chair and Sigma Chapter President, respectively, of our chapter at the University of Arizona.

We would like to highlight the work of Lacey Oscarson as Alumni Liaison. Lacey designed an Alumni Mid-Semester Newsletter to keep KE Sigma Chapter Alumni updated on upcoming events, member accomplishments, and personal stories from other alumni. KE Sigma Chapter Alumni were invited to the Fall 2021 College of Pharmacy Homecoming event on November 5th. Chapter members had the opportunity to network with alumni and celebrate the graduation of the Class of 2020.



Induction of new Sigma Chapter members on November 9th, 2021 (From left to right: Rachel Goodin, Dr. Ashley Campbell, Kimberly Osborn, Etornam Doe, Krizten Ortiz, Ysabel Padilla, Leticia Garcia, Megan Lopez, Dr. Amy Kennedy, Carson McKelvey)



Semester welcome back event on August 27th, 2021 (From left to right: Megan Lopez, Rachel Goodin, Leticia Garcia)

Sigma Chapter hosted multiple successful rush events over the past year that led to the induction of 9 new members. Over the spring 2021 semester, the chapter hosted socials utilizing Zoom and Discord programs to maintain social distancing. Students interested in our chapter used these events to play games and took the opportunity to network with current members and learn more about the chapter. For the fall semester, the chapter hosted a beach themed rush event at Reid Park in Tucson. Our chapter advisors, Dr. Amy Kennedy and Dr. Ashley Campbell, attended the event as well.

Penny Wars, the annual chapter fundraiser, was a great success this year. This fun event allows for students of each graduating class to compete against each other and the faculty to see who can raise the most money. The highest earning graduating class receives a free meal provided by our chapter. In total, our chapter raised \$1,346.80 - breaking previous school records! We had the honor of splitting the total amount among two organizations, the National Ovarian Cancer Coalition and the Tucson Chapter of Breast Cancer Awareness of the American Cancer Society. Each organization received \$673.40 from our chapter. Our chapter also hosted a Percentage Night at a Chipotle location on the University of Arizona campus on December 5th, 2021. We are looking forward to the results of our percentage night as these proceeds will go towards funding future rush events for prospective students.

Chapter Updates

OMEGA

University of Missouri – Kansas City | Kansas City, MO

Greetings from the Omega Chapter at the University of Missouri – Kansas City School of Pharmacy! It has been a crazy last two years with moving all classes online in 2020 and now being back in person! Not holding recruitment events in person meant our new member recruitment chairs had to get creative last fall. We had a scavenger hunt, social hour, and game night all held over Zoom as recruitment events. We were also able to hold our annual Back To School BBQ in a local park where social distancing could be practiced.

In addition to some fun recruitment events, our chapter had great service, social, and fundraising events in the spring. With COVID-19 being at the forefront of most conversations, our chapter decided to do our part in helping to vaccinate our community as a service event. We volunteered at Hy-Vee and helped with checking people in and giving vaccinations. For fundraising, we held our annual Bowling For Breast Cancer fundraiser, and all proceeds were donated to the Young Survival Coalition. The Young Survival Coalition is an organization that focuses on women 40 years old and younger that have been diagnosed with breast cancer. For social events, we had a Tie Dye in the Park event where our members got together and tie-dyed socks and shirts. We also held our annual Founders Day in May.

We were happy to be back on campus this fall and to be able to hold our meetings in person. For one of our fall general meetings, we invited Dr. Vincent Cascone, a former KE Omega chapter president and Oncology pharmacist with the University of Kansas health system, to speak about his experience in KE. This was a fun meeting to show P1's and P2's how important it is to get involved in organizations and how being a member of KE can have a lifelong impact. Lastly, we held a Share

the Warmth fundraiser where we collected new socks, hats, and gloves to donate to reStart, a homeless shelter in the Kansas City area. We are recruiting in the spring and have some fun plans for recruitment events! We are looking forward to 2022 and to growing our chapter!



KE Omega Chapter does their part to fight COVID by vaccinating community members at HyVee COVID clinic.



Current collegiate KE members gather together to congratulate graduating seniors at our annual Founder's Day celebration.

Chapter Updates

ALPHA EPSILON

University of Louisiana at Monroe | Monroe, LA

Greetings from the Alpha Epsilon Chapter at the University of Louisiana at Monroe College of Pharmacy! We've been busy and can't wait to share with you what we've been up to! In the fall of 2020, we initiated 36 sisters, and in the fall of 2021, we initiated 30 sisters! We couldn't be happier with the growth of our sisterhood!

An integral part of the Alpha Epsilon sisterhood is intramurals! We played in too many championships to name, but some of our favorites were volleyball, softball, flag football, kickball, and basketball. We were so excited to win the Warhawk Cup - an award given to the organization with the most intramural participation and the most winning events.

Every year, we strive to support our national project while also supporting our local women. As part of this, we donate baskets to women undergoing chemotherapy or radiation treatments for their breast or ovarian cancer at the Northeast Louisiana Cancer Institute. These baskets included lotion, blankets, crossword books, hard candies, and other goodies to help bring comfort to the patients at the Institute.

Throughout the past biennium, several of our sisters have been inducted into the Rho Chi Honor Society and Phi Lambda Sigma Leadership Society. Rho Chi inductees include Sera Andras, Maria Barranco, Maiah Hardin, McKay Hicks, Min Jee Kim, Cameron Leblanc, Hannah Milton, Rebecca Ortego, Erin Reed, Chloe Sealy, Amanda Smith, Kaitlin Smith, Kimberly Tran, Emma Tedder, Annie Watkins, and Morgan Wimberley. Phi Lambda Sigma inductees include Chelsea Bock, Toni Brooks, Olivia Buquet, Kobi Cameron, Cindy Ho, Min Jee Kim, Makayla Kraemer, Lauren Laforge, Rebecca Ortega, Keeley Richard, Amanda Smith, Elle Tarver, Kayla



Our Sisters are Athletes!

(Pictured from left to right beginning on the top: Maggie Brian, Morgan Wimberley, Emily Kate Perrin, Samantha Ragland, Kami Chargois, Keeley Richard, Megan Sistruck, Bailey Book, Emmeline Brunet, Danielle Camacho, Brandi Albarado, Lauren Laforge, Natalie Miller)



Our Sisters are Giving!

Every year, the Alpha Epsilon chapter donates baskets of goodies to women undergoing chemotherapy or radiation treatments for their breast or ovarian cancer at the Northeast Louisiana Cancer Institute. (Pictured from left to right: Anne Marie Freeland, Cindy Ho, Avery Crawford, Emmeline Brunet, Monica Whitman)

Continued...

ALPHA EPSILON

University of Louisiana at Monroe | Monroe, LA

Thibodaux, Kimberly Tran, Bailey Turnage, and Morgan Wimberley.

Our sisters have been honored with many awards and scholarships. Monica Whitman received an invitation for a prestigious APPE rotation at Our Lady of the Lake. Kimberly Tran was awarded several impressive scholarships including the CVS Caremark Scholarship, the Cardinal Health Endowment Scholarship, the Louisiana Pharmacist Association Scholarship, and the TLC Scaccia Superior Graduate Scholarship. We couldn't be more proud of these ladies!

While these past few years have been challenging for everyone, our sisterhood has adapted and thrived. We are extremely proud of the accomplishments of each and every one of our sisters. Being a part of Kappa Epsilon has allowed us to create bonds that will last a lifetime and has provided us with opportunities that will forever make an impact on our profession. We cannot wait to see all the good things that the future of our Fraternity holds.



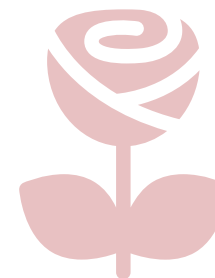
Our Sisters are Scholars!

These sisters have been inducted into Rho Chi- an organization of pharmacy students in the top 20% of their class. (Pictured from left to right beginning on the top: McKay Hicks, Annie Watkins, Emma Tedder, Kimberly Tran, Cameron Leblanc, Min Jee Kim, Kaitlin Smith, Chloe Sealy, Erin Reed, Rebecca Ortego, Maiah Hardin, Sera Andras)



Our Sisters are Leaders!

Many of our sisters were inducted into Phi Lambda Sigma- an organization of the most involved leaders in the pharmacy school.



Chapter Updates

ALPHA NU

Xavier University of Louisiana | New Orleans, LA

Kappa Epsilon Alpha Nu Chapter has had an eventful year of service and leadership activities.

Many of our members are also members of other organizations like Rho Chi and Phi Lambda Sigma. Members in Rho Chi include Destiny Knatt (p4) and chapter president, Tyanna Robinson (P3). P4 members Nedra Copelin and Chelsea Giroir are proud members of Phi Lambda Sigma.

Our chapter has been involved in several different community service events including the annual Susan G. Komen More Than Pink Walk. This service event was virtual this year allowing members to walk together for the cure of breast cancer no matter where they were. We also participated in a service event that we never had in the past. After hearing a professor, who is also an Oncology clinical pharmacist at Ochsner, mention that patients love puzzles as they often sit around at the hospital for such a long time. We jumped at the opportunity and decided to collect puzzles in a donation drive chapter Vice President Kimberly Lam called "Puzzles for Patients". This drive was an overwhelming success! With the help of our student body, we collected a ton of puzzles and were able to donate them all to Ochsner's Oncology Unit. The Pharmacists we spoke with were delighted and ensured us that the patients would be as well.

We also donated Christmas toys to our local Ronald McDonald House.

Our fourth-year members have had a busy semester out on rotations doing so many great and exciting things! Member Nedra Copelin was selected to be a part of University Medical Center's (UMC) new Residency track program for fourth year students. The program consisted



KE Alpha Nu Vice President Kimberly Lam (pictured third from the left) and President Tyanna Robinson (pictured second from the right) holding some of the puzzles dropped off to Ochsner's Oncology Unit. Also pictured are KE alumnae Dr. Jasmin Eugene (far left) and Ochsner Clinical Oncology Pharmacists.



Fourth-year student Nedra Copelin (pictured on the far left) out on rotations at UMC's Burn Center.

Continued...

ALPHA NU

Xavier University of Louisiana | New Orleans, LA

of 3 rotations at UMC along with longitudinal projects including an MUE and Emergency department medication reconciliation program. UMC is a level one trauma center, therefore critical care and emergency medicine are what they are known for. The rotations that she participated in were Critical care: Trauma intensive care unit, ambulatory care: HIV outpatient clinic, and Critical care: Burn intensive care unit. From these experiences, she was able to see a lot of different disease states and gain invaluable experience in critical care. Nedra shares, "Personally, I would like to at least complete a PGY1 residency and become a board-certified ambulatory care pharmacist. But the experiences I gained from UMC have helped me to grow as a future clinical pharmacist and to have a better understanding of what a future residency program will look like for me."

Fourth-year student Mercedes Butler attended the JenCare Senior Festival where she was able to communicate with numerous pharmacies and clinics as part of her community rotation. She was able to counsel elderly patients on some of their medications and about their disease states.

Our Spring 2021 recruitment took place virtually and although we hope to return to in person recruitment this spring, we are preparing to adjust to whatever changes may come our way!



Fourth-year student Mercedes Butler at JenCare Senior Festival.



Fourth-year students Jada Taylor (on the left) and Nedra Copelin (on the right) out on hospital rotation.



Member Melody Davis (pictured sitting on far left) and chapter advisor Dr. Cheryl Hayes (pictured sitting on the right) with some of the toys donated to local Ronald McDonald House.

Chapter Updates

ALPHA CHI

Shenandoah University | Winchester, Virginia

As we wind down 2021, Alpha Chi at Shenandoah University has had quite a year. While many of us are heavily involved in the Alpha Chi chapter, we also represent Kappa Epsilon in other organizations. The following members were part of the Phi Lambda Sigma, Beta Phi Chapter showing fierce leadership: Sewit Araia, Kelly Jeon, Noah Lizer, Keri Jensen, Mohammed Aboulatta, Niya Ayala, and Sidrah Alam. Speaking of leadership, few of our members hold President positions in various organizations. Hazel Miller is the president of the school's OL (organization leaders), Samhitha Dhandmundy is president of AMCP, and Sewit Araia is president of APhA-ASP. Sidrah Alam holds a national executive committee position at APhA-ASP as national member at large. We also have members that demonstrate strong academics and are part of Rho Chi, Gamma Omicron Chapter. Our fourth year members are pushing through rotations with graduation right around the corner. We thoroughly enjoyed hearing about their rotations. For example, four of our members - Mohammed Aboulatta, Sidrah Alam, Hung Dang, and Mohammed (Nasir) Kaker - were able to complete a rotation at the Indian Health Services in Arizona. Keri Jensen completed an international rotation in Honduras and was able to experience the pharmacy setting that was very different from the United States.

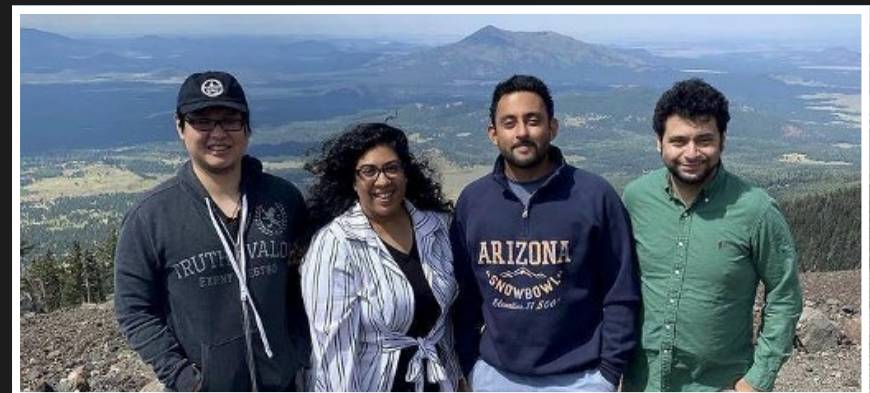
We are very proud of our chapter's involvement in other organizations but let's take a look at what we have done within our own chapter. While the pandemic limited what we could do in person, we made the best of it through the following ways. We held zoom hang out sessions with one including a Netflix watch party, where we could message each other during the movie. We kept in touch with alumni through our biannual Alumni Newsletters completed by Noah Lizer. Fun fact, Noah Lizer is married to Alpha Chi Alumni Alison Lizer! Fall 2021 we were able to recruit in person and held a recruitment event at continued on the next page...



Faria Fara (Fundraising Coordinator) places a ribbon on our "KE Christmas Tree for Cancer"



Third year students (left to right) Sewit Araia, Kelly Jeon, Palwasha Khan, Hazel Miller pose for a photo after hosting a recruitment event. November 2021



(left to right) Hung Dang, Sidrah Alam, Mohammed Kaker, and Mohammed Aboulatta on a hike in Arizona during their Indian Health Services rotation

Continued...

ALPHA CHI

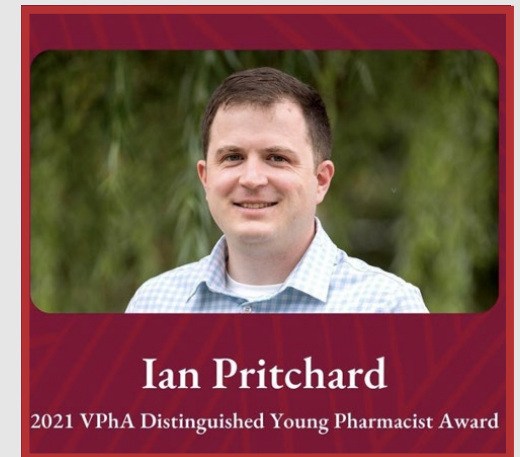
Shenandoah University | Winchester, Virginia

the same time as our Grand Council Connection meeting with national president, Christine Bryant. It was quite a busy but fun day and we got to meet potential new members. We also had to get creative with our service events since the pandemic did not allow us to continue with our annual events. For Breast Cancer Awareness Month, last year we held a "Practitioners in Pink" T-shirt fundraiser that was very popular. This year we held a pink pumpkin contest where members carved pumpkins and then a public vote was for the best pumpkin, where one dollar equaled one vote. To finish off the year, we held our annual "KE Christmas Tree for Cancer" decorated with ribbons.

Our members are very hardworking, devoted individuals who are committed to Kappa Epsilon and the profession and pharmacy. We follow the lead of our advisors Drs. Iain Pritchard and Rebecca Andersen. This year Dr. Pritchard received the 2021 VPhA Distinguished Young Pharmacist Award. Alpha Chi is proud of its chapter resilience and enthusiasm this past year and hopes to continue into 2022.



Noah Lizer (Alumni Liason) with his wife Alison Lizer (Alumni) and their two children.



Ian Pritchard

2021 VPhA Distinguished Young Pharmacist Award

Dr. Ian Pritchard, Alpha Chi Advisor, wins 2021 VPhA Distinguished Young Pharmacist Award



Chapter Updates

BETA BETA

University of Florida-Orlando | Orlando, Florida

Grattis to my fellow brothers of the Beta Beta Chapter on the successes we have shared this year! Grattis is the Swedish term for congratulations, which now has a special place in my heart. I was fortunate enough to participate in a study abroad program with a few of my fellow brothers. I had the pleasure of traveling with our chapter treasurer Rayven Glaubrecht and our past secretary Emily McKenna. A special surprise was that brothers from our Gainesville and Jacksonville chapter were included as well!

Our study abroad included stays in Sweden and Germany to learn about the two countries' pharmacy systems including community and hospital pharmacy. As some events were canceled due to the pandemic, we were still able to safely meet with peers and pharmacists to discuss the similarities and differences of pharmacy practice. Of interest was the differences between our pharmacy education, curriculum, and student organizations.

Many of us KE brothers obtained a bachelor's degree before starting our pharmacy education. However, in both countries, students are able to start their 5 year pharmacy education immediately after high school. Many of the students we spoke with mentioned how their universities only had pharmacy student associations and student council. As we are students that are highly involved in KE, we were stunned! This led to conversations amongst ourselves discussing how pharmacy school would be different without KE and the bonds we have formed. In our reflections, we discussed how immensely grateful we are for KE. We solidified that the brotherhood provided us all a safe space to grow into the people and professionals we wish to become. Brotherhood is family that we all treasure.

With that being said, the brothers of the Beta Beta Chapter have excelled in spite of the challenges we faced. To prepare for these challenges, we held The Leadership Retreat Series over the summer, which was attended by the executive board and the chairs of the committees. Following the retreat, each month the leadership team met to discuss topics including leadership expectations, effective communication, and brainstorming. Through these discussions, we have built a strong team that was able to present a united front to inspire our brothers. Many of our chairs planned events to foster our brother's connection including interactive rush events, hosting game nights, and special Holiday events. In turn, we have seen an increase in the brotherhood's responses and a strengthening of our fraternity bond. Our brotherhood's commitment to KE has made my presidency a very proud one and for that I extend my deepest appreciation. As the Germans would say, Danke KE for providing the family we all seek.



Past secretary Emily McKenna, myself current president Erika Quesinberry, current treasurer Rayven Glaubrecht. At Heidelberg Castle to visit a German pharmacy museum.



Jacksonville KE brother Brittany Brown, past secretary Emily McKenna, and myself current president Erika Quesinberry. Attending a Christmas Opera at German Oper am Rhein

Chapter Updates

BETA EPSILON

The Medical University of South Carolina | Charleston, South Carolina

This year, Kappa Epsilon Beta Chapter hosted several recruitment events this Fall semester, and they all were a huge hit! This year, the Recruitment Chair provided our chapter with four fun filled events that consisted of rock climbing at the James Island County Park climbing wall (Pictured), a Painting Night on MUSC's greenspace (Pictured), a Cornhole Tournament on a beautiful Friday afternoon, and a Luncheon hosted by our chapter! These events allowed not only for potential new members to see what KE has to offer, but also provided current members of our chapter to bond over team building events.

Beta Epsilon Chapter also hosted a Ghost Tour in Downtown Charleston, SC! (Pictured) We had almost everyone in our small chapter attend, and it was an amazing experience to hear the haunted tales of Charleston's past. This event was opened up to our current members and our Alumni, and it was awesome to see our past Chapter President and some of her friends attend the event to show support for our chapter! Beta Epsilon was taken on a tour through graveyards and old churches that highlighted many stories the tour guides gave during the two hour tour. In the upcoming years, KE at MUSC plans to host a college-wide event such as the Ghost Tour, and spark interest in potential members to fill our chapter!

continued on the next page...



The Painting Night recruitment event was a huge hit for our small organization! Many of our current members came to show support, as well as potential new recruits!

Continued...

BETA EPSILON

The Medical University of South Carolina | Charleston, South Carolina

During the beginning of the 2021 school year, our chapter struggled with motivation, interest, and excitement for our group not only from the current members, but those who held executive positions, as well. With our chapter only consisting of six people at the time, it was more important than anything else to spark motivation and interest outside of our chapter to grow in numbers. I saw this as a challenge, and wanted to show my peers how proud I was to be a member of Kappa Epsilon! I was initiated as Chapter President and Recruitment Chair, and began to plan and host team building events for our current members, a “Sock It to Cancer” drive for our local hospital, and a bake sale event this upcoming Spring. Beta Epsilon Chapter has only gotten stronger, and will continue to hopefully grow in ranks next Spring!



This was a really unique event to help our current members become more interested in being a part of KE!



Our Chapter loved this team building event/recruitment event! It was really fun to see everyone who came enjoy themselves-Some had never even rock climbed before!

Chapter Updates

BETA KAPPA

Presbyterian College | Clinton, South Carolina

The Beta Kappa Chapter of Kappa Epsilon at Presbyterian College School of Pharmacy (PCSP) is located in Clinton, South Carolina. We are one of eleven organizations on campus, but the only professional pharmacy fraternity. Beta Kappa hosts and attends a variety of service and social events throughout each year.

This year we attended Making Strides Against Breast Cancer which was hosted by the American Cancer Society in Greenville, South Carolina. Together as a chapter we walked 3 miles to honor those battling breast cancer as well as survivors. Additionally, our chapter teamed up with PCSP's SNPhA chapter to help raise money for the National Breast Cancer Foundation. We were able to raise \$101 for the cause through member's who donated to participate in a pink dress-down day. During the spring semester, Beta Kappa chapter hosted a booth at a community health fair event. Members educated families and students on information on and how to properly monitor for breast and ovarian cancer. This upcoming spring semester, we are



2021 Annual Big-Little Reveal. Beta Kappa's 14 new littles received themed gifts all week leading up to reveal on Friday.



Beta Kappa chapter members thinking pink at the Making Strides Against Breast Cancer walk in Greenville, SC in October 2021.

excited to host a KE spring cookout to raise money which will benefit the Bright Pink Foundation.

We love to give back to our community and participate in service-related events. One of our favorite annual events is the Adopt-A-Highway trash pickup. New members, returning members, and the executive board work together to make a difference in the town of Clinton by cleaning up a local highway and keeping our little town clean and beautiful, as it should be.

In addition to many community service events, our chapter also hosts several social events. Every year we host a big/little reveal. During the week leading up to reveal, littles receive each day from their big. This week is fun for current and new members alike and watching the surprised faces of new members' faces when the bigs reveal the selves is the perfect end to the week. Another social event our chapter enjoys is the secret santa event. This event helps new members form relationships with current chapter members while simultaneously strengthening the bond within our chapter.

Beta Kappa has had a year full of growth, friendship, and service and we cannot wait to see what the future holds!

Updates from Officers of the National Grand Council

UPDATES FROM THE PRESIDENT-ELECT

A Task We Must Handle

The 2021-2023 biennium is a continuous celebration of Kappa Epsilon turning 100! During this time, we will reflect on the past but most importantly we will prepare for the future of Kappa Epsilon, pharmacy, and healthcare. The future vision of Kappa Epsilon has been looking better and better each day since the launching of the inaugural Diversity, Equity, and Inclusion (DEI) Taskforce in Fall 2021. Included in this taskforce is a mixture of age groups, races, pharmacy specialties, and membership. The duties of the taskforce are:

- Revise, update, and develop policies & procedures to reinforce diversity and inclusion within Kappa Epsilon
- Create a library of DEI resources to enrich and foster an inclusive environment in our current membership
- Plan and host DEI workshops for the membership
- Actively promote DEI initiatives through all communication platforms and support collegiate, alumni, and professional members who participate in such activities

One of the most visible projects of the DEI taskforce are the monthly social media acknowledgements of heritage and awareness months. These posts are used to educate our sisters and brothers, as well as provide some great links to resources for more information. Sister Adwoa Sasu (Rho) is the only collegiate chair of any KE Committee. During this interview, Sister Sasu shared her passion for KE and what the DEI taskforce means to her.

Continued on next page...



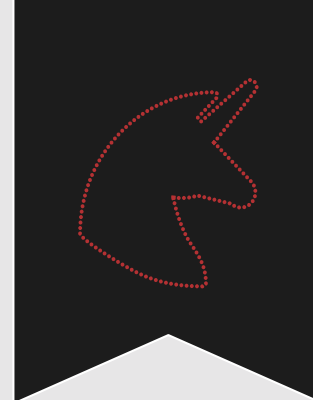
Nikkina Hankins
President Elect



Updates from Officers of the National Grand Council

UPDATES FROM THE PRESIDENT-ELECT CONTINUED...

A Task We Must Handle



Q: Why did you decide to be a member of a committee as a collegiate member?

A: KE values align with my values as a woman in the profession of pharmacy. As a collegiate member, I enjoyed being involved with the organization at the chapter level and wanted to get involved on the national level.

Q: Why did you choose the DEI Committee?

A: I chose to join the DE&I committee because promoting diversity is something I'm passionate about. It's rewarding to be able to engage with members who share similar interests.

Q: What does DEI mean to you?

To me, DE&I means embracing our differences and leveraging them for the betterment of society.

Q: Why is DEI important for pharmacy and the sisters and brothers of KE?

A: DE&I is important for the pharmacy profession and KE members because it equips us with resources to provide optimal patient care. Additionally, as KE members, DE&I is important to our organization because it aligns with our mission of unity, empowerment, and dedication to achieve personal and professional competence.



Adwoa Sasu (Rho)

Sister Sasu's passion is the spark that is needed for the light of KE. As written in our Closing Ritual, "Though the light be extinguished, may the vows of our fraternity be reflected through us in our thoughts, words, and deeds." The works of the DEI taskforce are only beginning and we would love for you to be a part of the light! If you are interested in being a member of please contact Grand President Krissy Bryant at KEPresident@gmail.com.

To learn more about the committees of KE and the committee chairs, visit <https://kappaepsilon.org/about/committees/> or contact the Executive Office at KE@affinity-strategies.com.

Updates from Officers of the National Grand Council

UPDATES FROM THE VICE PRESIDENT OF MEMBERSHIP RECRUITMENT

A Smooth Transition

It's no secret college can be intimidating. You've moved away from home, left your family and friends behind, and are attempting to learn to balance your new routine of attending classes, studying longer and more complex material, making new friends, and becoming involved in extracurricular activities. While my main motive for joining Kappa Epsilon was to meet new people and grow my professional network, I'd be lying if I said I wasn't also looking for an organization to help build my resume. At the time I wasn't sure what aspect of pharmacy I'd be working in following graduation, but I knew that regardless of the path I chose, having a solid resume and gaining connections within the small world of pharmacy would aid in the process of securing a future job.

I spent five years as an active member of the Psi chapter at Ohio Northern University. Given my love for the organization, I spent four of those five years as a member of the executive board. While I loved every minute of being on the executive board, serving as chapter president my last year was certainly my favorite of them all! Sadly, five years as an active member of the chapter came and went in the blink of an eye. Before I knew it, I was preparing to hand down the torch as chapter president and make the transition from collegiate member to alumni on rotation. While excited to start this new journey in my life, I was sad to be moving away from my closest friends, the majority of whom I met through KE. Luckily, just two months before closing out my four-year stretch serving on Psi chapter's executive board, I received the opportunity to serve as an intern to the previous Grand President and Current Past President, Erin Lingenfelter.

As an intern, I worked very closely with the other interns to ease the burden of Grand Council. I worked alongside many Grand Council officers to assist

with the creation of various toolkits in an effort to keep collegiate chapters afloat and successful amidst a pandemic. Additionally, I worked with one of my co-interns, Alicia Brenner, to create and lead President's Council virtual meetings every other month.

While working closely with the other interns and the members of Grand Council, I formed many strong connections. Despite never meeting many of them in person due to the pandemic, I can say without a doubt that they are some of my closest friends. Even to this day, I still keep in touch with many of them!

It was the overwhelmingly positive experiences I had as an intern which led me to run for Vice President of Membership Recruitment during the August 2021 virtual convention. I was hesitant to take on such a large position while finishing my APPE rotations and preparing to transition from a student to pharmacist, but looking back, I can't imagine it any other way. In only six short months of serving in this role, I have been blessed with so many opportunities. From building my professional network to meeting and working with new members of Kappa Epsilon nationwide, this experience has already been nothing short of amazing. Luckily for me, I have 18 more months within this role to look forward to!



Alexis Youngpeter
VP Membership Recruitment

Alumni Chapter Updates

HOW TO BE ENGAGED AS AN ALUMNI

By Tatyana Franklin, VP Communications

When we joined Kappa Epsilon on our college campuses, we gained with our education invaluable social relationships and professional connections that can last a lifetime. However, when we depart college and become alumni, the fraternity can become a distant memory, as real-life obligations (such as our careers, raising kids, moving to a new state, etc.) can take precedence in our daily lives. Nonetheless, graduating from your respective school doesn't mean that your relationship with Kappa Epsilon must come to an end.

There are multiple ways to stay engaged and connected as an alumni member in Kappa Epsilon. Today, we will discuss the top three avenues of engagement:

Alumni Hangout

Alumni can socialize and network with each other monthly via Zoom. These Alumni Hangout calls have a set meeting time of the second Friday of each month, for the ease of planning attendance during our busy schedules.

Zada Network

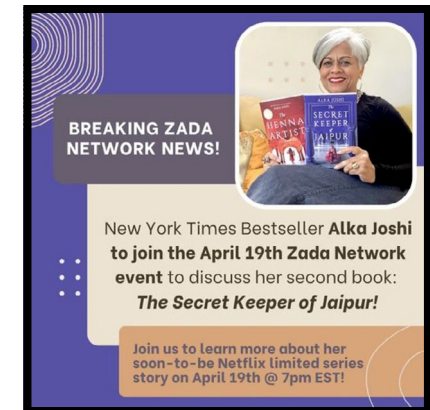
Calling all book lovers! The Zada Network book club is an exciting and unique way to connect with other alumni and collegiate members. If you have a love for reading books, this is an awesome way to bond with your fellow sisters and brothers.

Join a National Committee

The National Committees serve the mission of the Kappa Epsilon Fraternity by achieving its goals. Committee members volunteer to serve throughout a biennium and work strategically to achieve the goals of their respective committee. You can

check out the different committees and what they entail at <https://kappaepsilon.org/about/committees/>

Remember, KE is for life! We must continue to support this organization beyond our collegiate years.



Tatyana Franklin
VP Communications

HISTORY TIDBITS



KAPPA EPSILON AND CAREER BOOKLETS

By Metta Lou Henderson (Sigma) Past Grand President

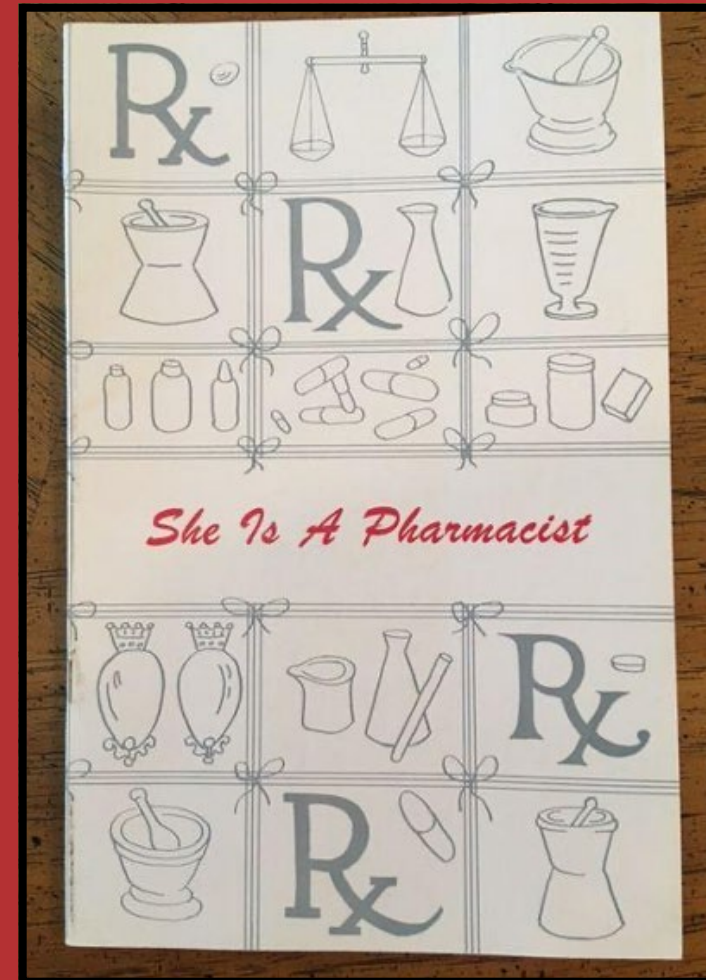
Since our very beginning, Kappa Epsilon has emphasized collaborating with our members to provide information on potential career opportunities. Each convention has at least one program highlighting opportunities. From 1936 to 1942, The Bond included a series of articles on hospital pharmacy. Beyond those years the series continued, but the articles were on other pharmacy careers. At the same time, we were asked to assist with recruiting women into pharmacy.

At the 1951 convention, it was decided to produce a booklet to recruit women into pharmacy and career recruitment became the national project. That brochure was entitled "Women in Pharmacy," and was written by Marjorie Coghill (Gamma) and Eunice Bonow (Zeta). The brochure copies were widely distributed until sometime between 1952-1953. By this time the supply was exhausted. However, pharmacy educators wanted more of this type of literature.

In 1958, Eunice Bonow wrote an updated version called "She is a Pharmacist." A young girl interviewed women pharmacists. The information came from surveys of KE's members practicing in various areas. The brochure was purchased by college of pharmacies, state boards, state associations and other pharmacy organizations. By 1971, about 60,000 copies had been distributed.

A new brochure was written and released in 1971 to replace "She is a Pharmacist". It was entitled "Pharmacy: Career for the Modern Girl." At that time, modern girl was a common name being utilized to promote many activities.

Today, KE does not have any type of recruitment brochure. Of course, it would include the broad recruitment features to include everyone, not just women.



Awards Announcement

Nellie Wakeman Fellowship Recipient



ASHLEY SOTOODEH
PHARM.D (XI)

Nellie Wakeman Fellowship Recipient

The Nellie Wakeman Fellowship is award for students planning to enroll in the first year of, or is already enrolled in, a Ph.D., Master's, or combined Residency/Master's degree program at an accredited U.S. College or School of Pharmacy. The award is jointly sponsored by the American Foundation for Pharmaceutical Education (AFPE) and Kappa Epsilon Fraternity, Inc. The 2022 Nellie Wakeman Recipient is Ashley Sotoodeh, PharmD (Xi).

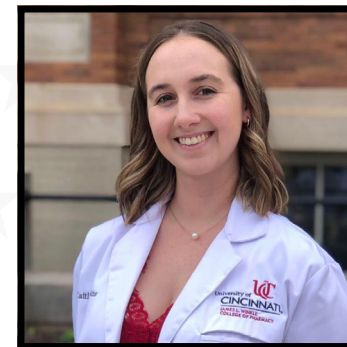
Dr. Sotoodeh is a 2021 Doctor of Pharmacy graduate from the University of Texas at Austin College of Pharmacy and was involved in various professional organizations throughout pharmacy school, including the Texas Pharmacy Association, Academy of Managed Care Pharmacy and Phi Lambda Sigma Leadership Honorary Society. She served as the president of Kappa Epsilon's Xi Chapter at The University of Texas-Austin College of Pharmacy for two years and is currently serving her second two-year term on Kappa Epsilon's Grand Council as Grand Secretary. She is completing a managed care pharmacy residency at Health Care Service Corporation/Blue Cross Blue Shield of Illinois.



ALEXIS YOUNGPETER (PSI)



LEAH FRANKS (ALPHA GAMMA)



CAITLIN HAWKINS (RHO)



KELLY JEON (ALPHA CHI)



JENNIFER BAIRD (ALPHA PHI)

2022 Zada Cooper Scholarship Recipients

The Zada M. Cooper Scholarship was established in 1955 in honor of Kappa Epsilon's Founder, Zada M. Cooper. Recognizing superior achievement, this scholarship is supported by a small percentage of each member's national dues in addition to generous donations. Kappa Epsilon, the Kappa Epsilon Foundation, and the Scholarship Committee, chaired by Julie Kreyenbuhl, are pleased to announce this year's 2021 - 2022 recipients of the Zada M. Cooper Scholarships.

Awards Announcement

KE Merck Vanguard Leadership Award Recipient

Marilyn K. Speedie, Ph.D. (Pi) is the 2022 KE Merck Vanguard Leadership Award Recipient. The KE/Merck Vanguard Leadership Award was established in 1989 to recognize exemplary pharmacists who are members of KE, like Dr. Speedie. She is Dean Emeritus and Professor Emeritus at the University of Minnesota College of Pharmacy, having stepped down as Dean in July 2017 after 21.5 years as dean. As dean, her leadership interests included developing the college's education, research and clinical practice missions including drug discovery and development and advancing pharmacy practice to improve care for patients. During her deanship she expanded the pharmacy program to the campus of the University of Minnesota, Duluth, established the Center for Leading Healthcare Change, and built a national presence for the College of Pharmacy (ranked #2 nationally among all pharmacy schools). In 2014 she was awarded the American Pharmacists Association's highest honor, the Remington Medal Award, for her leadership in the profession.



MARILYN K. SPEEDIE
PHD (PI)

**KE Merck Vanguard Leadership
Award Recipient**

Dr. Speedie received a B.S. in pharmacy in 1970 and a Ph.D. in medicinal chemistry and pharmacognosy in 1973 from Purdue University (where she joined KE) and spent 21 years (1975-1996) on the faculty of the University of Maryland School of Pharmacy, including serving as head of the Department of Pharmaceutical Sciences. Her scientific research interests were in biotechnology. She also has published extensively on educational and professional issues and published a history of the University of Minnesota College of Pharmacy. She continues to participate in advocacy for the profession in Minnesota and nationally.

Dr. Speedie served a 3-year presidential term for the American Association of Colleges of Pharmacy from 2005-2008, and 10 years as a member of the Board of Trustees for the United States Pharmacopeia. She is on the Board of Directors for MyMeds, Inc.

FALL 2022 BOND CHAPTER ASSIGNMENTS

Lambda

Alpha Beta

Beta Gamma

Xi

Alpha Theta

Beta Mu

Tau

Alpha Pi

Beta Pi

Articles and photos are due **May 1st, 2022** on kappaepsilon.org. Submissions should be in a Word document, and each photo should have a caption. If you have any questions, please contact the **VP of Communications**, via email at kevpcommunication@gmail.com.

Awards & Scholarships

Nominate your colleagues
for these prestigious awards.

KE/MERCK VANGUARD LEADERSHIP AWARD

Awarded to an exemplary alumni who has contributed both professionally and within their community. Nominations due October 15th annually.

CAREER ACHIEVEMENT AWARD

Active alumnus member noted for their professional accomplishments. Nominations due October 15th annually.

LINDA RODGERS MEMORIAL AWARD

Honors a KE member who exemplifies Linda's characteristics of leadership, dedication, diplomacy, friendship, and inspiration to others. \$200 award. Nominations due May 15th in odd years (Alumni) Nominations due May 15th in even years (Collegiate)

ZADA COOPER SCHOLARSHIPS

Recognizes superior achievement and is presented annually to active collegiate members. \$750 scholarship award. Applications due November 15th annually.

KE/AFPE NELLIE WAKEMAN FELLOWSHIP

Monetary award used to encourage members to pursue an advanced degree in a college of pharmacy graduate program. \$7500 award. Applications due February 1st annually.

FOUNDATION GRANTS

Provides members and chapters with incentive money for innovative educational projects in the profession of pharmacy. May apply anytime!

GIVE OR DONATE TO KAPPA EPSILON

In a continuing effort to provide financial stability and perpetual support for Kappa Epsilon Fraternity and the Kappa Epsilon Foundation, please consider making a donation to one or both of these entities. **Let us speak with one voice, in strategy and purpose, and share our resources to promote the future of Kappa Epsilon.**

MY GIFT TO THE FRATERNITY IS \$ _____

MY GIFT TO THE FOUNDATION IS \$ _____

Gifts to the Foundation are tax-deductible.

Please make checks payable to: Kappa Epsilon Fraternity and/or Kappa Epsilon Foundation. Or, pay by credit card.

MASTERCARD/VISA #: _____ EXP: _____

NAME: _____

STREET, CITY, STATE, ZIP: _____

Send form to: Kappa Epsilon, 403 W St Charles Rd, Suite 403B Lombard, IL 60148

You may also give or donate at www.kappaepsilon.org

CONNECT WITH KAPPA EPSILON



kappaepsilon.org

If you are interested in submitting articles and photos for an upcoming issue of The BOND, please contact the VP Communications, via email at kevpcommunication@gmail.com.



On FACEBOOK

On Facebook [Kappa Epsilon Fraternity, Inc](#)



On TWITTER

On Twitter [@KEGrandCouncil](#)



On INSTAGRAM

On Instagram [@kappaepsilon1921](#)



ON LINKEDIN

On LinkedIn: [Kappa Epsilon Professional Pharmacy Fraternity](#)



On EMAIL

On Email: KE@affinity-strategies.com

The Bond is an official publication of Kappa Epsilon Fraternity, Inc.

The magazine is published two times annually.

KE Executive Office, c/o Affinity Strategies,

403 W St Charles Rd, Suite 403B Lombard, IL 60148

KE@affinity-strategies.com.